

Product datasheet

Anti-D-Dimer antibody [DD1] ab10050

[4 References](#) [1 Image](#)

Overview

Product name	Anti-D-Dimer antibody [DD1]
Description	Mouse monoclonal [DD1] to D-Dimer
Host species	Mouse
Specificity	ab10050 is specific for D-Dimer and high molecular weight fibrin degradation products. No cross-reaction with D-Monomer or D-Dimer treated with mercaptoethanol.
Tested applications	Suitable for: ELISA, WB, Sandwich ELISA
Species reactivity	Reacts with: Human
Immunogen	This clone has been derived from hybridization of Sp 2/0 myeloma cells with spleen cells of Balb/c mice immunized with homogenized fibrin clot.
General notes	<p>Abcam is committed to meeting high standards of ethical manufacturing and has decided to discontinue this product by June 2020 as it has been generated by the ascites method. We are sorry for any inconvenience this may cause.</p> <p>Concentration varies from lot to lot and can be provided on request.</p>

Properties

Form	Liquid
Storage instructions	Shipped at 4°C. Upon delivery aliquot and store at -20°C. Avoid freeze / thaw cycles.
Storage buffer	<p>pH: 7.40</p> <p>Preservative: 0.1% Sodium azide</p> <p>Constituent: PBS</p>
Purity	Ascites
Purification notes	Purified from ascites.
Clonality	Monoclonal
Clone number	DD1
Myeloma	Sp2/0
Isotype	IgG2a

Applications

The Abpromise guarantee

Our [Abpromise guarantee](#) covers the use of ab10050 in the following tested applications.

The application notes include recommended starting dilutions; optimal dilutions/concentrations should be determined by the end user.

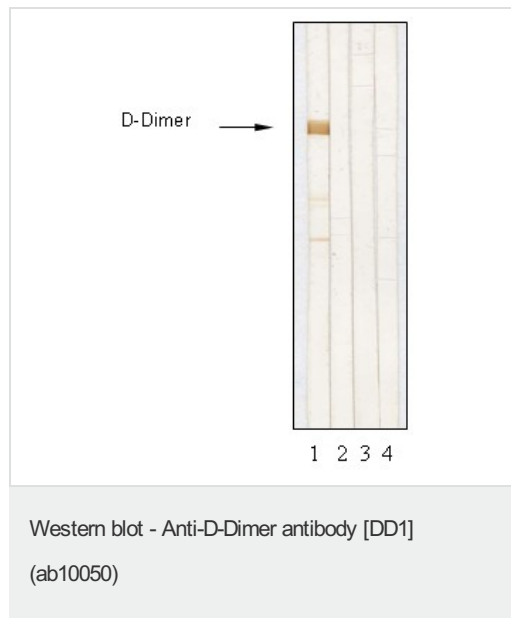
Application	Abreviews	Notes
ELISA		Use at an assay dependent dilution.
WB		Use at an assay dependent dilution. To be analyzed in sandwich immunoassay, plasma must be diluted with 10 mM Tris/HCl buffer, pH 7.5, containing 1 M NaCl and 0.1 % Tween 20. To avoid non-specific binding, the final NaCl concentration in plasma samples must be 0.5 M or more.
Sandwich ELISA		Use at an assay dependent dilution. Can be used as Capture antibody. Recommended for D-Dimer detection in Human Plasma.

Target

Relevance

A fibrin degradation fragment or product that is produced by the action of plasmin on fibrin in the clot dissolution process.

Images



D-Dimer, D-monomer and fibrinogen immunodetection by ab10050 by Western blot:

Lane 1 - D-Dimer

Lane 2 - D-monomer

Lane 3 - fibrinogen

Lane 4 - D-Dimer treated with mercaptoethanol

D-Dimer, D-monomer and fibrinogen immunodetection by ab10050 by Western blot:

Lane 1 - D-Dimer

Lane 2 - D-

Please note: All products are "FOR RESEARCH USE ONLY. NOT FOR USE IN DIAGNOSTIC PROCEDURES"

Our Abpromise to you: Quality guaranteed and expert technical support

- Replacement or refund for products not performing as stated on the datasheet

- Valid for 12 months from date of delivery
- Response to your inquiry within 24 hours
- We provide support in Chinese, English, French, German, Japanese and Spanish
- Extensive multi-media technical resources to help you
- We investigate all quality concerns to ensure our products perform to the highest standards

If the product does not perform as described on this datasheet, we will offer a refund or replacement. For full details of the Abpromise, please visit <https://www.abcam.com/abpromise> or contact our technical team.

Terms and conditions

- Guarantee only valid for products bought direct from Abcam or one of our authorized distributors