

Anti-HES7 antibody ab102937

1 Image

Overview

Product name	Anti-HES7 antibody
Description	Rabbit polyclonal to HES7
Host species	Rabbit
Tested applications	Suitable for: WB
Species reactivity	Reacts with: Mouse
Immunogen	Synthetic peptide conjugated to KLH, corresponding to a region within N terminal amino acids 33-63 of Human HES7.
Positive control	Mouse heart tissue lysate
General notes	<p>The Life Science industry has been in the grips of a reproducibility crisis for a number of years. Abcam is leading the way in addressing this with our range of recombinant monoclonal antibodies and knockout edited cell lines for gold-standard validation. Please check that this product meets your needs before purchasing.</p> <p>If you have any questions, special requirements or concerns, please send us an inquiry and/or contact our Support team ahead of purchase. Recommended alternatives for this product can be found below, along with publications, customer reviews and Q&As</p>

Properties

Form	Liquid
Storage instructions	Shipped at 4°C. Store at 4°C (up to 6 months). Store at -20°C long term.
Storage buffer	Preservative: 0.09% Sodium azide Constituent: PBS
Purity	Immunogen affinity purified
Purification notes	ab102937 is purified through a protein A column, followed by peptide affinity purification.
Clonality	Polyclonal
Isotype	IgG

Applications

The **Abpromise guarantee** Our **Abpromise guarantee** covers the use of ab102937 in the following tested applications.

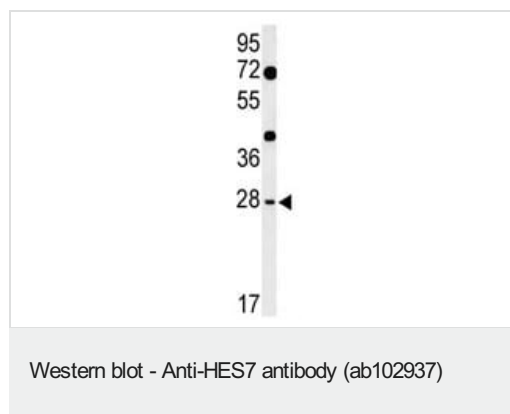
The application notes include recommended starting dilutions; optimal dilutions/concentrations should be determined by the end user.

Application	Abreviews	Notes
WB		1/100 - 1/500. Predicted molecular weight: 25 kDa.

Target

Function	Transcriptional repressor. Represses transcription from both N box- and E box-containing promoters. May with HES1, cooperatively regulate somite formation in the presomitic mesoderm (PSM). May function as a segmentation clock, which is essential for coordinated somite segmentation.
Involvement in disease	Defects in HES7 are the cause of spondylocostal dysostosis type 4 (SCDO4) [MIM:613686]. A rare condition of variable severity characterized by vertebral and costal anomalies. The main feature include dwarfism, vertebral fusion, hemivertebrae, posterior rib fusion, reduced rib number, and other rib malformations.
Sequence similarities	Contains 1 basic helix-loop-helix (bHLH) domain. Contains 1 Orange domain.
Domain	Has a particular type of basic domain which includes a helix-interrupting proline. The C-terminal WRPW motif is a transcriptional repression motif which is necessary for interaction with Groucho/TLE family members, transcriptional corepressors recruited to specific target DNA by Hairy-related proteins.
Cellular localization	Nucleus.

Images



Anti-HES7 antibody (ab102937) at 1/100 dilution + Mouse heart tissue lysate at 35 µg

Predicted band size: 25 kDa

Please note: All products are "FOR RESEARCH USE ONLY. NOT FOR USE IN DIAGNOSTIC PROCEDURES"

Our Abpromise to you: Quality guaranteed and expert technical support

- Replacement or refund for products not performing as stated on the datasheet
- Valid for 12 months from date of delivery
- Response to your inquiry within 24 hours

- We provide support in Chinese, English, French, German, Japanese and Spanish
- Extensive multi-media technical resources to help you
- We investigate all quality concerns to ensure our products perform to the highest standards

If the product does not perform as described on this datasheet, we will offer a refund or replacement. For full details of the Abpromise, please visit <https://www.abcam.com/abpromise> or contact our technical team.

Terms and conditions

- Guarantee only valid for products bought direct from Abcam or one of our authorized distributors