


Product datasheet

Anti-LMTK3 antibody ab110516

[1 References](#) [2 Images](#)

Overview

Product name	Anti-LMTK3 antibody
Description	Rabbit polyclonal to LMTK3
Host species	Rabbit
Tested applications	Suitable for: IHC-P, WB
Species reactivity	Reacts with: Mouse Predicted to work with: Human 
Immunogen	Synthetic peptide conjugated to KLH, corresponding to a region within N terminal amino acids 320-350 of Human LMTK3 (XP_055866.6).
Positive control	Mouse liver tissue lysates. IHC-P: Mouse liver FFPE tissue sections.

Properties

Form	Liquid
Storage instructions	Shipped at 4°C. Store at +4°C short term (1-2 weeks). Upon delivery aliquot. Store at -20°C long term.
Storage buffer	Preservative: 0.09% Sodium azide Constituent: PBS
Purity	Immunogen affinity purified
Purification notes	ab110516 is purified through a protein A column, followed by peptide affinity purification.
Clonality	Polyclonal
Isotype	IgG

Applications

The Abpromise guarantee Our [Abpromise guarantee](#) covers the use of ab110516 in the following tested applications. The application notes include recommended starting dilutions; optimal dilutions/concentrations should be determined by the end user.

Application	Abreviews	Notes

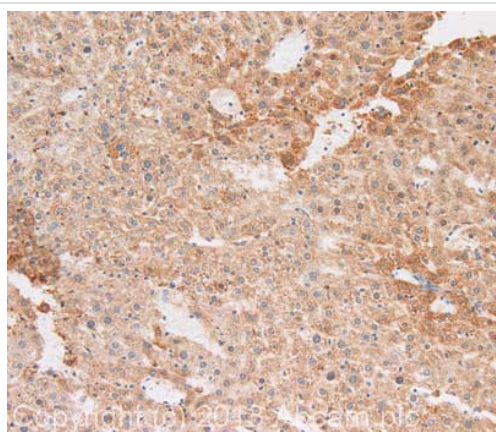
Application	Abreviews	Notes
IHC-P		Use a concentration of 10 µg/ml. Perform heat mediated antigen retrieval with citrate buffer pH 6 before commencing with IHC staining protocol.
WB		1/100 - 1/500. Predicted molecular weight: 153 kDa.

Target

Cellular localization

Cell Membrane

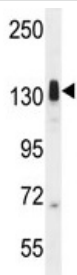
Images



Immunohistochemistry (Formalin/PFA-fixed paraffin-embedded sections) - Anti-LMTK3 antibody (ab110516)

IHC image of LMTK3 staining in mouse liver formalin fixed paraffin embedded tissue section, performed on a Leica Bond system using the standard protocol B. The section was pre-treated using heat mediated antigen retrieval with sodium citrate buffer (pH6, epitope retrieval solution 1) for 20 mins. The section was then incubated with ab110516, 10µg/ml, for 15 mins at room temperature. A goat anti-rabbit biotinylated secondary antibody was used to detect the primary, and visualized using an HRP conjugated ABC system. DAB was used as the chromogen. The section was then counterstained with haematoxylin and mounted with DPX.

For other IHC staining systems (automated and non-automated) customers should optimize variable parameters such as antigen retrieval conditions, primary antibody concentration and antibody incubation times.



Western blot - Anti-LMTK3 antibody (ab110516)

Anti-LMTK3 antibody (ab110516) at 1/100 dilution + Mouse liver tissue lysates at 35 µg

Predicted band size: 153 kDa

Please note: All products are "FOR RESEARCH USE ONLY. NOT FOR USE IN DIAGNOSTIC PROCEDURES"

Our Promise to you: Quality guaranteed and expert technical support

- Replacement or refund for products not performing as stated on the datasheet
- Valid for 12 months from date of delivery
- Response to your inquiry within 24 hours
- We provide support in Chinese, English, French, German, Japanese and Spanish
- Extensive multi-media technical resources to help you
- We investigate all quality concerns to ensure our products perform to the highest standards

If the product does not perform as described on this datasheet, we will offer a refund or replacement. For full details of the Abpromise, please visit <https://www.abcam.com/abpromise> or contact our technical team.

Terms and conditions

- Guarantee only valid for products bought direct from Abcam or one of our authorized distributors