

Product datasheet

Anti-Spectrin (alpha + beta) antibody [SB-SP1] ab11184

[1 References](#) [1 Image](#)

Overview

Product name	Anti-Spectrin (alpha + beta) antibody [SB-SP1]
Description	Mouse monoclonal [SB-SP1] to Spectrin (alpha + beta)
Host species	Mouse
Specificity	Monoclonal anti-Spectrin (alpha and beta) localizes the 220 kDa (beta) and 240 kDa (alpha) bands of human erythrocyte spectrin as well as a number of polypeptides in the region of 170, 150, 85, and 45 kDa. It is likely these lower molecular weight polypeptides may have an epitope shared by both the alpha and beta subunits of spectrin.
Tested applications	Suitable for: WB, ICC/IF
Species reactivity	Reacts with: Mouse, Human
Immunogen	Full length native Human erythroid spectrin was used as the immunogen (purified).
Positive control	Extract of human erythrocyte ghosts.
General notes	For continuous use, store at 2-8 °C for up to one month. If slight turbidity occurs upon prolonged storage, clarify the solution by centrifugation before use.

Properties

Form	Liquid
Storage instructions	Shipped at 4°C. Store at +4°C short term (1-2 weeks). Upon delivery aliquot. Store at -20°C or -80°C. Avoid freeze / thaw cycle.
Storage buffer	Preservative: 0.097% Sodium azide Constituent: Ascites
Purity	Ascites
Purification notes	The product is provided as ascites fluid.
Clonality	Monoclonal
Clone number	SB-SP1
Isotype	IgG1

Applications

The Abpromise guarantee

Our [Abpromise guarantee](#) covers the use of ab11184 in the following tested applications.

The application notes include recommended starting dilutions; optimal dilutions/concentrations should be determined by the end user.

Application	Abreviews	Notes
WB		
ICC/IF		

Application notes

IF: Use at an assay dependent dilution. By immunofluorescence the antibody will stain human spectrin in erythrocyte smears.

WB: 1/500 (determined using an extract of human erythrocyte ghosts or purified human erythrocyte spectrin and immunoperoxidase labeling). Expected bands at 220 kDa (beta) and 240 kDa (alpha) chains of human erythrocyte spectrin. The antibody stains the beta subunit stronger than the alpha subunit at the recommended titer. In addition, a number of polypeptides in the region of 170, 150, 85, and 45 kDa will react with the antibody.

Not tested in other applications.

Optimal dilutions/concentrations should be determined by the end user.

Target

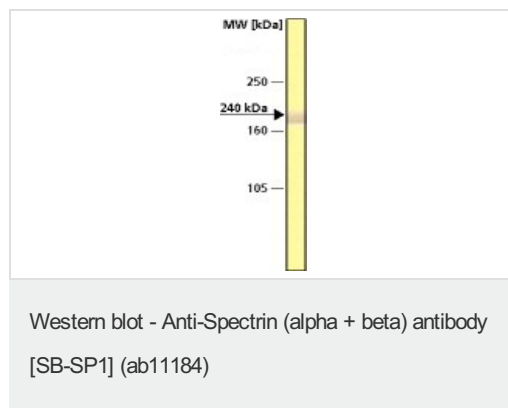
Relevance

Spectrin is a major constituent of the erythrocyte skeleton accounting for 25% of the total membrane protein and 75% of the cytoskeletal mass. Spectrin is an actin crosslinking and molecular scaffold protein that links the plasma membrane to the actin cytoskeleton by associating with the cytoplasmic surface of the membrane by attachment to ankyrin. The membrane skeleton influences several cellular properties such as cell shape, restriction of mobility of the integral membrane protein exposed at the cell surface and transmembrane movement of phospholipids and cholesterol and organization of organelles. Spectrin is a tetramer made up of alpha-beta dimers linked in a head-to-head arrangement. Mutations in spectrin result in a variety of hereditary red blood cell disorders, including elliptocytosis type 2, pyropoikilocytosis, and spherocytic hemolytic anemia.

Cellular localization

Cytoplasmic; Plasma membrane; Cytoskeleton

Images



Anti-Spectrin (alpha + beta) antibody [SB-SP1] (ab11184) at 1/1000 dilution + Erythrocytes ghost extract

Predicted band size: 240 kDa

Please note: All products are "FOR RESEARCH USE ONLY. NOT FOR USE IN DIAGNOSTIC PROCEDURES"

Our Abpromise to you: Quality guaranteed and expert technical support

- Replacement or refund for products not performing as stated on the datasheet
- Valid for 12 months from date of delivery
- Response to your inquiry within 24 hours

- We provide support in Chinese, English, French, German, Japanese and Spanish
- Extensive multi-media technical resources to help you
- We investigate all quality concerns to ensure our products perform to the highest standards

If the product does not perform as described on this datasheet, we will offer a refund or replacement. For full details of the Abpromise, please visit <https://www.abcam.com/abpromise> or contact our technical team.

Terms and conditions

- Guarantee only valid for products bought direct from Abcam or one of our authorized distributors