

Product datasheet

Anti-Pro-neuropeptide Y antibody [2C10] ab129300

3 Images

Overview

Product name	Anti-Pro-neuropeptide Y antibody [2C10]
Description	Mouse monoclonal [2C10] to Pro-neuropeptide Y
Host species	Mouse
Tested applications	Suitable for: WB, ELISA, IHC-P, Sandwich ELISA
Species reactivity	Reacts with: Human
Immunogen	Recombinant full length protein, corresponding to amino acids 29-97 of Human Pro-neuropeptide Y Run BLAST with ExPASy Run BLAST with NCBI
Positive control	Human adrenal medulla tissue; Pro-neuropeptide Y transfected 293T cell lysate.

Properties

Form	Liquid
Storage instructions	Shipped at 4°C. Store at +4°C short term (1-2 weeks). Upon delivery aliquot. Store at -20°C long term.
Storage buffer	pH: 7.20 Constituent: 99% PBS
Purity	Ascites
Clonality	Monoclonal
Clone number	2C10
Isotype	IgG1
Light chain type	kappa

Applications

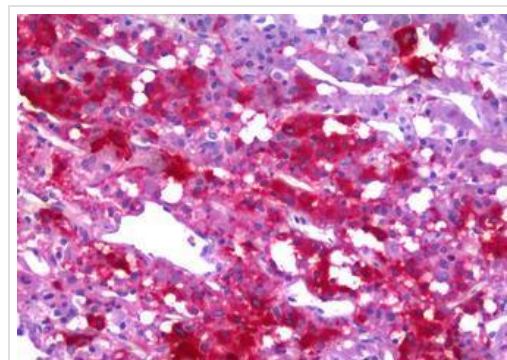
The Abpromise guarantee Our [Abpromise guarantee](#) covers the use of ab129300 in the following tested applications. The application notes include recommended starting dilutions; optimal dilutions/concentrations should be determined by the end user.

Application	Abreviews	Notes
WB		1/500 - 1/1000. Predicted molecular weight: 11 kDa.
ELISA		Use at an assay dependent concentration.
IHC-P		Use a concentration of 5 µg/ml. Perform heat mediated antigen retrieval with citrate buffer pH 6 before commencing with IHC staining protocol.
Sandwich ELISA		Use at an assay dependent concentration.

Target

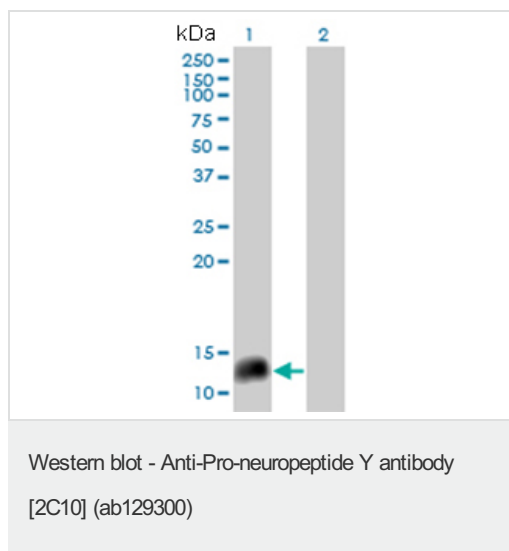
Function	NPY is implicated in the control of feeding and in secretion of gonadotrophin-release hormone.
Tissue specificity	One of the most abundant peptides in the nervous system. Also found in some chromaffin cells of the adrenal medulla.
Sequence similarities	Belongs to the NPY family.
Cellular localization	Secreted.

Images



ab129300 at 5 µg/ml, staining Pro-neuropeptide Y in Formalin-Fixed, Paraffin-embedded Human Adrenal Medulla tissue by Immunohistochemistry.

Immunohistochemistry (Formalin/PFA-fixed paraffin-embedded sections) - Anti-Pro-neuropeptide Y antibody [2C10] (ab129300)

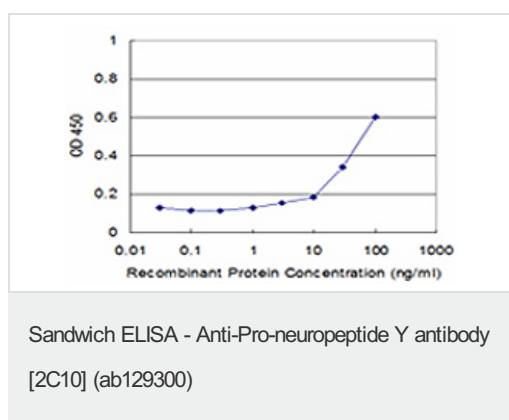


All lanes : Anti-Pro-neuropeptide Y antibody [2C10] (ab129300)

Lane 1 : 293T lysate, transfected with Neuropeptide Y CPON

Lane 2 : 293T lysate, untransfected

Predicted band size: 11 kDa



Detection limit for recombinant tagged Pro-neuropeptide Y is approximately 3ng/ml as a capture antibody.

Please note: All products are "FOR RESEARCH USE ONLY. NOT FOR USE IN DIAGNOSTIC PROCEDURES"

Our Abpromise to you: Quality guaranteed and expert technical support

- Replacement or refund for products not performing as stated on the datasheet
- Valid for 12 months from date of delivery
- Response to your inquiry within 24 hours
- We provide support in Chinese, English, French, German, Japanese and Spanish
- Extensive multi-media technical resources to help you
- We investigate all quality concerns to ensure our products perform to the highest standards

If the product does not perform as described on this datasheet, we will offer a refund or replacement. For full details of the Abpromise, please visit <https://www.abcam.com/abpromise> or contact our technical team.

Terms and conditions

- Guarantee only valid for products bought direct from Abcam or one of our authorized distributors