

## Product datasheet

# Anti-Dopamine Receptor D1 antibody ab13317

[3 Images](#)

### Overview

<b>Product name</b>	Anti-Dopamine Receptor D1 antibody
<b>Description</b>	Rabbit polyclonal to Dopamine Receptor D1
<b>Host species</b>	Rabbit
<b>Tested applications</b>	<b>Suitable for:</b> IHC-P, ICC
<b>Species reactivity</b>	<b>Reacts with:</b> Human
<b>Immunogen</b>	Synthetic peptide conjugated to KLH.
<b>Epitope</b>	C-term

### Properties

<b>Form</b>	Liquid
<b>Storage instructions</b>	Store at +4°C short term (1-2 weeks). Aliquot and store at -20°C or -80°C. Avoid repeated freeze / thaw cycles.
<b>Storage buffer</b>	Preservative: 0.01% Sodium Azide Constituents: PBS, pH 7.7
<b>Purity</b>	Immunogen affinity purified
<b>Clonality</b>	Polyclonal
<b>Isotype</b>	IgG

### Applications

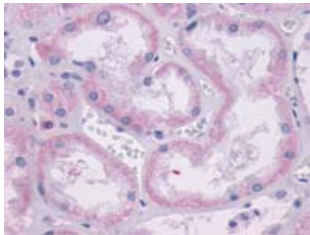
**The Abpromise guarantee** Our [Abpromise guarantee](#) covers the use of ab13317 in the following tested applications.  
The application notes include recommended starting dilutions; optimal dilutions/concentrations should be determined by the end user.

Application	Abreviews	Notes
IHC-P		1/100 - 1/200.
ICC		Use at an assay dependent dilution.

## Target

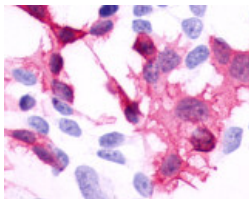
<b>Function</b>	Dopamine receptor whose activity is mediated by G proteins which activate adenylyl cyclase.
<b>Tissue specificity</b>	Detected in caudate, nucleus accumbens and in the olfactory tubercle.
<b>Sequence similarities</b>	Belongs to the G-protein coupled receptor 1 family.
<b>Cellular localization</b>	Cell membrane. Endoplasmic reticulum membrane. Transport from the endoplasmic reticulum to the cell surface is regulated by interaction with DNAJC14.

## Images



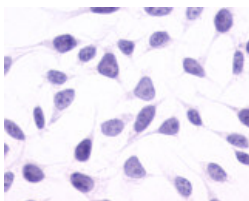
ab13317 in IHC at 1/100-1/200 dilution staining kidney, proximal & distal convoluted tubules.

Immunohistochemistry (Formalin/PFA-fixed paraffin-embedded sections) - Anti-Dopamine Receptor D1 antibody (ab13317)



Cells expressing target protein - immunostained with target antibody.

Immunocytochemistry - Anti-Dopamine Receptor D1 antibody (ab13317)



Cells expressing vector only - immunostained with target antibody

Immunocytochemistry - Anti-Dopamine Receptor D1 antibody (ab13317)

**Please note:** All products are "FOR RESEARCH USE ONLY. NOT FOR USE IN DIAGNOSTIC PROCEDURES"

**Our Abpromise to you: Quality guaranteed and expert technical support**

- Replacement or refund for products not performing as stated on the datasheet
- Valid for 12 months from date of delivery
- Response to your inquiry within 24 hours
- We provide support in Chinese, English, French, German, Japanese and Spanish
- Extensive multi-media technical resources to help you
- We investigate all quality concerns to ensure our products perform to the highest standards

If the product does not perform as described on this datasheet, we will offer a refund or replacement. For full details of the Abpromise, please visit <https://www.abcam.com/abpromise> or contact our technical team.

## **Terms and conditions**

---

- Guarantee only valid for products bought direct from Abcam or one of our authorized distributors