

Product datasheet

Anti-PEA15 antibody - C-terminal ab135694

★★★★★ 2 Abreviews 1 References 4 Images

Overview

Product name	Anti-PEA15 antibody - C-terminal
Description	Rabbit polyclonal to PEA15 - C-terminal
Host species	Rabbit
Tested applications	Suitable for: WB, IHC-P, Flow Cyt
Species reactivity	Reacts with: Mouse, Human
Immunogen	Synthetic peptide conjugated to KLH, corresponding to a region within C terminal amino acids 93-123 of Human PEA15.
Positive control	T47D cell line and Mouse lung tissue lysates; Mouse heart tissue; MDA-MB231 cells.

Properties

Form	Liquid
Storage instructions	Shipped at 4°C. Store at +4°C short term (1-2 weeks). Upon delivery aliquot. Store at -20°C long term.
Storage buffer	Preservative: 0.09% Sodium azide Constituent: 99% PBS
Purity	Immunogen affinity purified
Purification notes	ab135694 is purified through a protein A column, followed by peptide affinity purification.
Clonality	Polyclonal
Isotype	IgG

Applications

The Abpromise guarantee Our [Abpromise guarantee](#) covers the use of ab135694 in the following tested applications. The application notes include recommended starting dilutions; optimal dilutions/concentrations should be determined by the end user.

Application	Abreviews	Notes
WB	★★★★★ (2)	1/100 - 1/500. Predicted molecular weight: 15 kDa.

Application	Abreviews	Notes
IHC-P		1/50 - 1/100. Perform heat mediated antigen retrieval with citrate buffer pH 6 before commencing with IHC staining protocol.
Flow Cyt		1/10 - 1/50. ab171870 - Rabbit polyclonal IgG, is suitable for use as an isotype control with this antibody.

Target

Function

Blocks Ras-mediated inhibition of integrin activation and modulates the ERK MAP kinase cascade. Inhibits RPS6KA3 activities by retaining it in the cytoplasm (By similarity). Inhibits both TNFRSF6- and TNFRSF1A-mediated CASP8 activity and apoptosis. Regulates glucose transport by controlling both the content of SLC2A1 glucose transporters on the plasma membrane and the insulin-dependent trafficking of SLC2A4 from the cell interior to the surface.

Tissue specificity

Ubiquitously expressed. Most abundant in tissues such as heart, brain, muscle and adipose tissue which utilize glucose as an energy source. Lower expression in glucose-producing tissues. Higher levels of expression are found in tissues from individuals with type 2 diabetes than in controls.

Sequence similarities

Contains 1 DED (death effector) domain.

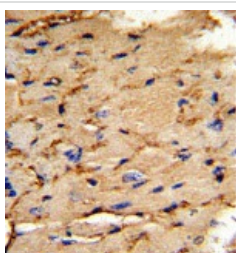
Post-translational modifications

Phosphorylated by protein kinase C and calcium-calmodulin-dependent protein kinase. These phosphorylation events are modulated by neurotransmitters or hormones.

Cellular localization

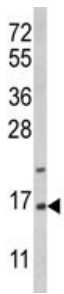
Cytoplasm. Associated with microtubules.

Images



Immunohistochemical analysis of Formalin-fixed, Paraffin-embedded mouse heart tissue labelling PEA15 with ab135694 at 1/50 dilution followed by peroxidase-conjugated secondary antibody and DAB staining.

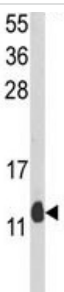
Immunohistochemistry (Formalin/PFA-fixed paraffin-embedded sections) - Anti-PEA15 antibody - C-terminal (ab135694)



Western blot - Anti-PEA15 antibody - C-terminal (ab135694)

Anti-PEA15 antibody - C-terminal (ab135694) at 1/100 dilution + T47D cell line lysates at 35 µg

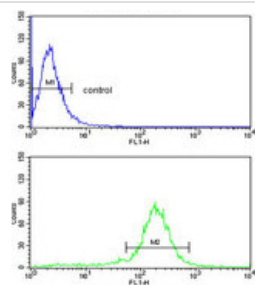
Predicted band size: 15 kDa



Western blot - Anti-PEA15 antibody - C-terminal (ab135694)

Anti-PEA15 antibody - C-terminal (ab135694) at 1/100 dilution + Mouse lung tissue lysates at 35 µg

Predicted band size: 15 kDa



Flow Cytometry - Anti-PEA15 antibody - C-terminal (ab135694)

Flow Cytometric analysis of MDA-MB231 cells labelling PEA15 with ab135694 at 1/10 dilution (bottom histogram) compared to a negative control cell (top histogram). FITC-conjugated goat-anti-rabbit secondary antibodies were used for the analysis.

Please note: All products are "FOR RESEARCH USE ONLY. NOT FOR USE IN DIAGNOSTIC PROCEDURES"

Our Abpromise to you: Quality guaranteed and expert technical support

- Replacement or refund for products not performing as stated on the datasheet
- Valid for 12 months from date of delivery

- Response to your inquiry within 24 hours
- We provide support in Chinese, English, French, German, Japanese and Spanish
- Extensive multi-media technical resources to help you
- We investigate all quality concerns to ensure our products perform to the highest standards

If the product does not perform as described on this datasheet, we will offer a refund or replacement. For full details of the Abpromise, please visit <https://www.abcam.com/abpromise> or contact our technical team.

Terms and conditions

- Guarantee only valid for products bought direct from Abcam or one of our authorized distributors