

Product datasheet

Recombinant Human Syntaxin 16 protein ab152906

1 Image

Description

| | | |
|--------------------------|--|--|
| Product name | Recombinant Human Syntaxin 16 protein | |
| Expression system | Wheat germ | |
| Protein length | Protein fragment | |
| Animal free | No | |
| Nature | Recombinant | |
| Species | Human | |
| Sequence | MATRRLTDAFLLLRNNSIQNRQLLAEQLADDRMALVSGISL DPEAAIGVT KRPPPKWVDGVDEIQYDVGRKQKMKELASLHDKHLNRP TLDDSSEEEH | |
| Amino acids | 1 to 99 | |
| Tags | GST tag N-Terminus | |

Specifications

Our [Abpromise guarantee](#) covers the use of **ab152906** in the following tested applications.

The application notes include recommended starting dilutions; optimal dilutions/concentrations should be determined by the end user.

| | |
|-------------------------|--|
| Applications | ELISA |
| | Western blot |
| Form | Liquid |
| Additional notes | Protein concentration is above or equal to 0.05 mg/ml. |

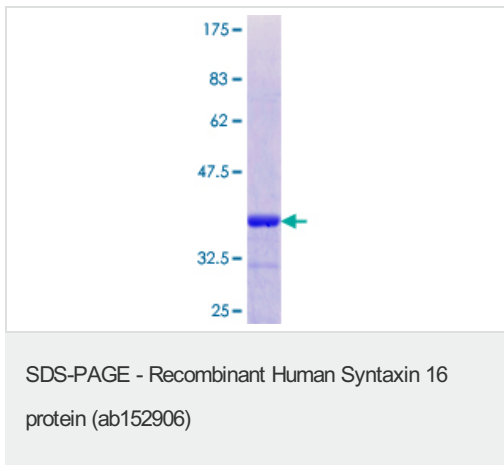
Preparation and Storage

| | |
|------------------------------|---|
| Stability and Storage | Shipped on dry ice. Upon delivery aliquot and store at -80°C. Avoid freeze / thaw cycles. |
| | pH: 8.00 |
| | Constituents: 0.31% Glutathione, 0.79% Tris HCl |

General Info

| | |
|-------------------------------|--|
| Function | SNARE involved in vesicular transport from the late endosomes to the trans-Golgi network. |
| Tissue specificity | Ubiquitous. |
| Involvement in disease | Genetic variations in STX16 may be a cause of pseudohypoparathyroidism type 1B (PHP1B) [MIM:603233]. Pseudohypoparathyroidism refers to a heterogeneous group of disorders characterized by resistance to parathyroid hormone (PTH). PHP1B is characterized by PTH-resistant hypocalcemia and hyperphosphatemia. Patients affected with PHP1B lack developmental defects characteristic of Albright hereditary osteodystrophy, and typically show no other endocrine abnormalities besides resistance to PTH. In some cases microdeletions involving STX16 appear to cause loss of methylation at exon A/B of the GNAS gene, resulting in PHP1B. |
| Sequence similarities | Belongs to the syntaxin family. Contains 1 t-SNARE coiled-coil homology domain. |
| Cellular localization | Cytoplasm and Golgi apparatus membrane. |

Images



ab152906 on a 12.5% SDS-PAGE stained with Coomassie Blue.

Please note: All products are "FOR RESEARCH USE ONLY. NOT FOR USE IN DIAGNOSTIC PROCEDURES"

Our Abpromise to you: Quality guaranteed and expert technical support

- Replacement or refund for products not performing as stated on the datasheet
- Valid for 12 months from date of delivery
- Response to your inquiry within 24 hours
- We provide support in Chinese, English, French, German, Japanese and Spanish
- Extensive multi-media technical resources to help you
- We investigate all quality concerns to ensure our products perform to the highest standards

If the product does not perform as described on this datasheet, we will offer a refund or replacement. For full details of the Abpromise, please visit <https://www.abcam.com/abpromise> or contact our technical team.

Terms and conditions

- Guarantee only valid for products bought direct from Abcam or one of our authorized distributors