

Product datasheet

Recombinant Human GLI4 protein ab158532

1 References 1 Image

Description

<b>Product name</b>	Recombinant Human GLI4 protein
<b>Expression system</b>	Wheat germ
<b>Protein length</b>	Full length protein
<b>Animal free</b>	No
<b>Nature</b>	Recombinant
<b>Species</b>	Human
<b>Sequence</b>	<p>MAALGDIQESPSVSPVSLSSPGTPGTQHHEPQLHLHGH            QHGSPGSSPKV            LSQPSDLDLQDVVEEVEIGRDTFWPDSEPKPEQAPRSPG            SQAPDEGAGGAL            RSLLRSLPRRARCSAGFGPESSAERPAGQPPGAVPCAQ            PRGAWRVTLVQQ            AAAGPEGAPERAAELGVNFGRSRQGSARGAKPHRCEAC            GKSFKYNSLLK            HQRHTGEKPYACHECGKRFRGWSGFIQHHRHTGEKPYE            CGQCGRAFSH            SSHFTQHLRIHNGEKPYKCGECGQAFSQSSNLVRHQRLH            TGEKPYACSQ            GKAFWSSVLIEHQRHTGEKPYECSDCGKAFRGRSHFFR            HLRHTHTGEKPFACGACGKAFGQSSQLIQHQRVHYRE</p>
<b>Amino acids</b>	1 to 376
<b>Tags</b>	GST tag N-Terminus

Specifications

Our [Abpromise guarantee](#) covers the use of **ab158532** in the following tested applications.

The application notes include recommended starting dilutions; optimal dilutions/concentrations should be determined by the end user.

<b>Applications</b>	Western blot
	ELISA
<b>Form</b>	Liquid

Additional notes

## Preparation and Storage

---

### Stability and Storage

Shipped on dry ice. Upon delivery aliquot and store at -80°C. Avoid freeze / thaw cycles.

pH: 8.00

Constituents: 0.31% Glutathione, 0.79% Tris HCl

## General Info

---

### Sequence similarities

Belongs to the krueppel C2H2-type zinc-finger protein family.

Contains 7 C2H2-type zinc fingers.

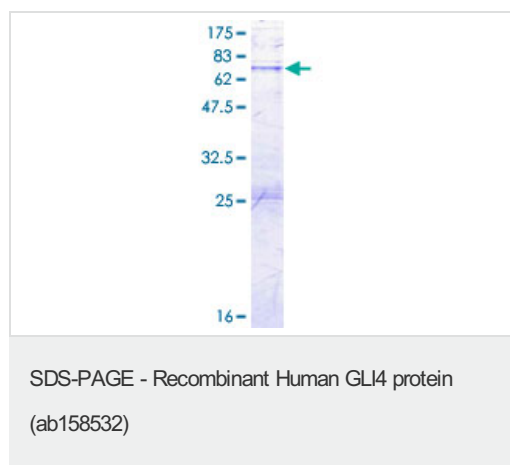
### Cellular localization

Nucleus.

---

## Images

---



ab158532 on a 12.5% SDS-PAGE stained with Coomassie Blue.

**Please note:** All products are "FOR RESEARCH USE ONLY. NOT FOR USE IN DIAGNOSTIC PROCEDURES"

## Our Abpromise to you: Quality guaranteed and expert technical support

---

- Replacement or refund for products not performing as stated on the datasheet
- Valid for 12 months from date of delivery
- Response to your inquiry within 24 hours
- We provide support in Chinese, English, French, German, Japanese and Spanish
- Extensive multi-media technical resources to help you
- We investigate all quality concerns to ensure our products perform to the highest standards

If the product does not perform as described on this datasheet, we will offer a refund or replacement. For full details of the Abpromise, please visit <https://www.abcam.com/abpromise> or contact our technical team.

## Terms and conditions

---

- Guarantee only valid for products bought direct from Abcam or one of our authorized distributors