

Product datasheet

Anti-Glutamate Receptor 1 (AMPA subtype) (phospho S863) antibody ab195696

1 Image

Overview

Product name	Anti-Glutamate Receptor 1 (AMPA subtype) (phospho S863) antibody
Description	Rabbit polyclonal to Glutamate Receptor 1 (AMPA subtype) (phospho S863)
Host species	Rabbit
Specificity	ab195696 detects endogenous levels of Glutamate Receptor 1 (AMPA subtype) only when phosphorylated at serine 863.
Tested applications	Suitable for: WB
Species reactivity	Reacts with: Mouse, Rat, Human
Immunogen	Synthetic peptide corresponding to Human Glutamate Receptor 1 (AMPA subtype) (phospho S863). Database link: P42261
Positive control	Whole lysate of HeLa cells treated with PMA.

Properties

Form	Liquid
Storage instructions	Shipped at 4°C. Store at +4°C short term (1-2 weeks). Upon delivery aliquot. Store at -20°C long term. Avoid freeze / thaw cycle.
Storage buffer	pH: 7.4 Preservative: 0.02% Sodium azide Constituents: 49% PBS, 50% Glycerol, 0.87% Sodium chloride
Purity	Immunogen affinity purified
Clonality	Polyclonal
Isotype	IgG

Applications

The Abpromise guarantee Our [Abpromise guarantee](#) covers the use of ab195696 in the following tested applications. The application notes include recommended starting dilutions; optimal dilutions/concentrations should be determined by the end user.

Application	Abreviews	Notes
WB		1/500 - 1/2000. Predicted molecular weight: 102 kDa.

Target

Function

Ionotropic glutamate receptor. L-glutamate acts as an excitatory neurotransmitter at many synapses in the central nervous system. Binding of the excitatory neurotransmitter L-glutamate induces a conformation change, leading to the opening of the cation channel, and thereby converts the chemical signal to an electrical impulse. The receptor then desensitizes rapidly and enters a transient inactive state, characterized by the presence of bound agonist.

Tissue specificity

Widely expressed in brain.

Sequence similarities

Belongs to the glutamate-gated ion channel (TC 1.A.10.1) family. GRIA1 subfamily.

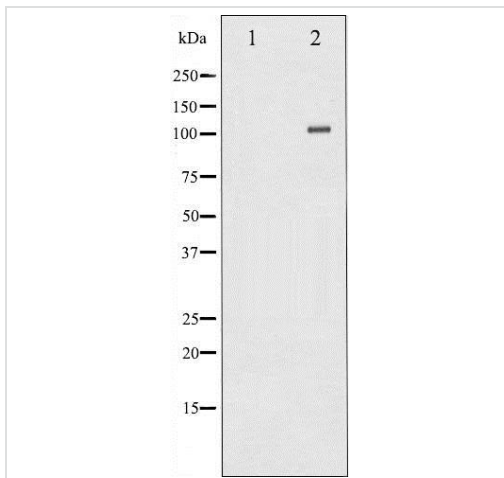
Post-translational modifications

Palmitoylated. Depalmitoylated upon glutamate stimulation. Cys-603 palmitoylation leads to Golgi retention and decreased cell surface expression. In contrast, Cys-829 palmitoylation does not affect cell surface expression but regulates stimulation-dependent endocytosis.

Cellular localization

Cell membrane. Endoplasmic reticulum membrane. Cell junction > synapse > postsynaptic cell membrane. Interaction with CACNG2 promotes cell surface expression.

Images



Western blot - Anti-Glutamate Receptor 1 (AMPA subtype) (phospho S863) antibody (ab195696)

All lanes : Anti-Glutamate Receptor 1 (AMPA subtype) (phospho S863) antibody (ab195696) at 1/500 dilution

Lane 1 : Whole lysate of HeLa cells treated with PMA with antigen-specific peptide

Lane 2 : Whole lysate of HeLa cells treated with PMA

Lysates/proteins at 12.5 µg per lane.

Predicted band size: 102 kDa

Please note: All products are "FOR RESEARCH USE ONLY. NOT FOR USE IN DIAGNOSTIC PROCEDURES"

Our Abpromise to you: Quality guaranteed and expert technical support

- Replacement or refund for products not performing as stated on the datasheet
- Valid for 12 months from date of delivery

- Response to your inquiry within 24 hours
- We provide support in Chinese, English, French, German, Japanese and Spanish
- Extensive multi-media technical resources to help you
- We investigate all quality concerns to ensure our products perform to the highest standards

If the product does not perform as described on this datasheet, we will offer a refund or replacement. For full details of the Abpromise, please visit <https://www.abcam.com/abpromise> or contact our technical team.

Terms and conditions

- Guarantee only valid for products bought direct from Abcam or one of our authorized distributors