

Product datasheet

Anti-LILRA1 antibody ab199695

[2 Images](#)

Overview

Product name	Anti-LILRA1 antibody
Description	Rabbit polyclonal to LILRA1
Host species	Rabbit
Tested applications	Suitable for: ICC/IF, WB
Species reactivity	Reacts with: Human
Immunogen	Synthetic peptide within Human LILRA1 aa 58-89. The exact sequence is proprietary. Database link: O75019
Positive control	HL-60 cell lysate; A549 cells.

Properties

Form	Liquid
Storage instructions	Shipped at 4°C. Store at +4°C short term (1-2 weeks). Upon delivery aliquot. Store at -20°C long term. Avoid freeze / thaw cycle.
Storage buffer	pH: 7.40 Preservative: 0.02% Sodium azide Constituents: 49% PBS, 0.87% Sodium chloride, 50% Glycerol PBS without Mg ²⁺ and Ca ²⁺ .
Purity	Protein A purified
Clonality	Polyclonal
Isotype	IgG

Applications

The Abpromise guarantee Our [Abpromise guarantee](#) covers the use of ab199695 in the following tested applications. The application notes include recommended starting dilutions; optimal dilutions/concentrations should be determined by the end user.

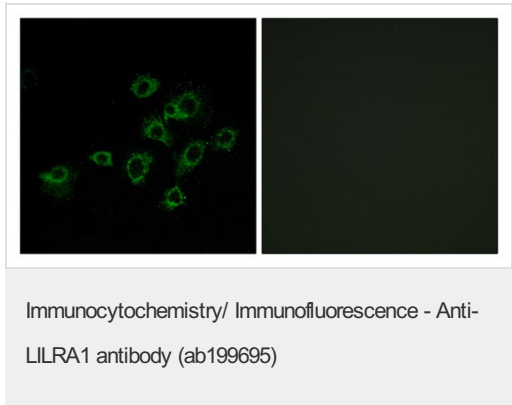
Application	Abreviews	Notes
ICC/IF		1/100.

Application	Abreviews	Notes
WB		1/1000. Predicted molecular weight: 53 kDa.

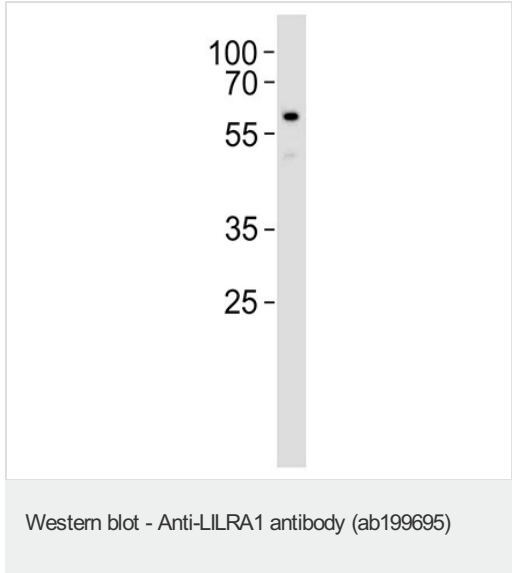
Target

Function	May act as receptor for class I MHC antigens.
Tissue specificity	Detected in monocytes and B-cells.
Sequence similarities	Contains 4 Ig-like C2-type (immunoglobulin-like) domains.
Cellular localization	Membrane.

Images



Immunofluorescent analysis of A549 cells labeling LILRA1 with ab199695 at 1/100 dilution.



Anti-LILRA1 antibody (ab199695) at 1/1000 dilution + HL-60 cell lysate at 35 µg

Secondary
Goat anti-rabbit IgG H&L(HRP) at 1/5000 dilution

Predicted band size: 53 kDa

Please note: All products are "FOR RESEARCH USE ONLY. NOT FOR USE IN DIAGNOSTIC PROCEDURES"

Our Abpromise to you: Quality guaranteed and expert technical support

- Replacement or refund for products not performing as stated on the datasheet

- Valid for 12 months from date of delivery
- Response to your inquiry within 24 hours
- We provide support in Chinese, English, French, German, Japanese and Spanish
- Extensive multi-media technical resources to help you
- We investigate all quality concerns to ensure our products perform to the highest standards

If the product does not perform as described on this datasheet, we will offer a refund or replacement. For full details of the Abpromise, please visit <https://www.abcam.com/abpromise> or contact our technical team.

Terms and conditions

- Guarantee only valid for products bought direct from Abcam or one of our authorized distributors