

## Product datasheet

# Anti-Giantin antibody ab24586

★★★★★ 25 Abreviews 175 References 5 Images

### Overview

<b>Product name</b>	Anti-Giantin antibody
<b>Description</b>	Rabbit polyclonal to Giantin
<b>Host species</b>	Rabbit
<b>Specificity</b>	ab24586 reacts with giantin. This antibody serves as an excellent marker for the Golgi complex in mammalian cells.
<b>Tested applications</b>	<b>Suitable for:</b> ICC/IF, WB, IHC-Fr
<b>Species reactivity</b>	<b>Reacts with:</b> Mouse, Rat, Hamster, Human, Monkey, Zebrafish
<b>Immunogen</b>	Synthetic peptide, corresponding to N terminal amino acids 1-469 of Human Giantin.
<b>Positive control</b>	Hela cell lysates

### Properties

<b>Form</b>	Liquid
<b>Storage instructions</b>	Shipped at 4°C. Upon delivery aliquot and store at -20°C. Avoid freeze / thaw cycles.
<b>Storage buffer</b>	Constituent: Whole serum
<b>Purity</b>	Whole antiserum
<b>Clonality</b>	Polyclonal
<b>Isotype</b>	IgG

### Applications

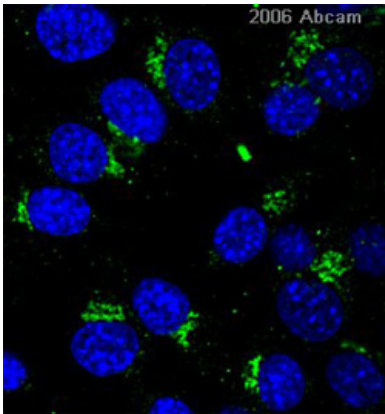
**The Abpromise guarantee** Our [Abpromise guarantee](#) covers the use of ab24586 in the following tested applications. The application notes include recommended starting dilutions; optimal dilutions/concentrations should be determined by the end user.

Application	Abreviews	Notes
ICC/IF	★★★★★ (21)	1/1000. PubMed: 17322883In addition, found to work at 1/2000.
WB	★★★★★ (2)	1/5000. Predicted molecular weight: 367 kDa.
IHC-Fr	★★★★★ (2)	Use at an assay dependent concentration.

## Target

<b>Function</b>	May participate in forming intercisternal cross-bridges of the Golgi complex.
<b>Cellular localization</b>	Golgi apparatus membrane.

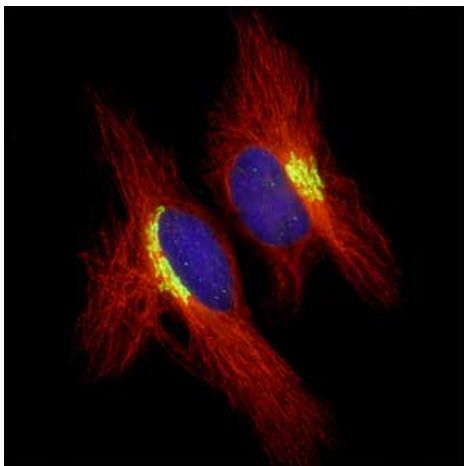
## Images



ab24586 at a 1/200 dilution staining mouse C2 myoblasts by ICC/IF. The cells were paraformaldehyde fixed and blocked with 3% BSA and incubated with antibody for 1 hour. Bound antibody was detected using an Alex Fluor ®488 conjugated donkey anti-rabbit IgG (H+L).

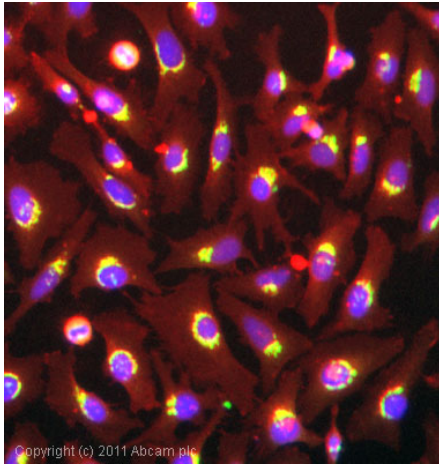
Immunocytochemistry/ Immunofluorescence - Anti-Giantin antibody (ab24586)

This image is courtesy of an Abreview submitted by Miss Anja Drozd



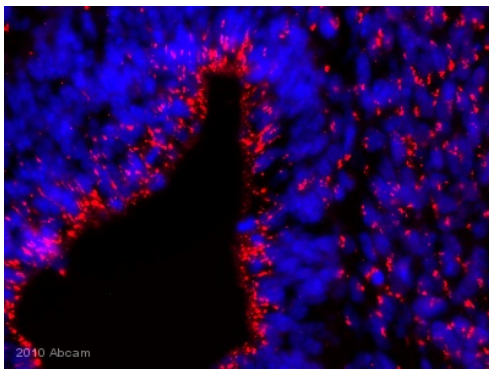
ab24586 at a 1/500 dilution staining HeLa cells (green) by Immunocytochemistry/Immunofluorescence. Other structures visualized with monoclonal anti-TU27 (red).

Immunocytochemistry/ Immunofluorescence - Anti-Giantin antibody (ab24586)



Immunocytochemistry/ Immunofluorescence - Anti-Giantin antibody (ab24586)

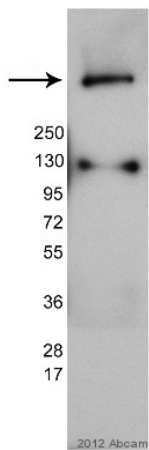
ICC/IF image of ab24586 stained Hela cells. The cells were 100% methanol fixed (5 min) and then incubated in 1%BSA / 10% normal goat serum / 0.3M glycine in 0.1% PBS-Tween for 1h to permeabilise the cells and block non-specific protein-protein interactions. The cells were then incubated with the antibody (ab24586, 1µg/ml) overnight at +4°C. The secondary antibody (green) was DyLight® 488 goat anti-rabbit IgG - H&L, pre-adsorbed (ab96899) used at a 1/250 dilution for 1h. Alexa Fluor® 594 WGA was used to label plasma membranes (red) at a 1/200 dilution for 1h. DAPI was used to stain the cell nuclei (blue) at a concentration of 1.43µM.



Immunohistochemistry (Frozen sections) - Anti-Giantin antibody (ab24586)

This image is courtesy of an Anonymous Abreview.

ab24586 staining Giantin in E10.5 Mouse otic epithelium tissue by Immunohistochemistry (Frozen sections). The sections were PFA-fixed prior to blocking with 5% serum for 1 hour at 37°C. The primary antibody was diluted 1/500 and incubated with the sample for 1 hour at 37°C. An Alexa Fluor® 568-conjugated Goat anti-Rabbit IgG polyclonal was used as the secondary antibody, diluted 1/500.



Western blot - Anti-Giantin antibody (ab24586)

This image is courtesy of an Abreview submitted by Armen Petrosyan

Anti-Giantin antibody (ab24586) at 1/3000 dilution + A549 whole cell lysate at 80 µg

#### Secondary

HRP conjugated Donkey anti-Rabbit IgG polyclonal

Developed using the ECL technique.

Performed under reducing conditions.

**Predicted band size:** 367 kDa

**Observed band size:** ~400 kDa

**Additional bands at:** 130 kDa (possible non-specific binding)

**Exposure time:** 30 seconds

Blocked with 5% milk in PBST for 1 hour at 22°C

**Please note:** All products are "FOR RESEARCH USE ONLY. NOT FOR USE IN DIAGNOSTIC PROCEDURES"

#### Our Abpromise to you: Quality guaranteed and expert technical support

- Replacement or refund for products not performing as stated on the datasheet
- Valid for 12 months from date of delivery
- Response to your inquiry within 24 hours
- We provide support in Chinese, English, French, German, Japanese and Spanish
- Extensive multi-media technical resources to help you
- We investigate all quality concerns to ensure our products perform to the highest standards

If the product does not perform as described on this datasheet, we will offer a refund or replacement. For full details of the Abpromise, please visit <https://www.abcam.com/abpromise> or contact our technical team.

#### Terms and conditions

- Guarantee only valid for products bought direct from Abcam or one of our authorized distributors