

Product datasheet

Human colon tissue lysate - total protein ab30051

1 Image

Overview

Product name Human colon tissue lysate - total protein

Description Human colon total protein lysate

General notes

Protein is isolated from whole tissue homogenates using a proprietary technique. The tissue was frozen in liquid nitrogen immediately after excision and then stored at -70°C. Quality control: 1. The isolated protein pattern on SDS-PAGE gel is visualized by coomassie blue staining. The pattern is consistent with each lot. 2. The isolated protein is Western Blot analyzed by either a GAPDH or beta-actin antibody. The expression level is consistent with each lot. Ethics: Human tissue samples are collected with the informed consent of the donors & relatives and are excised by licensed medical doctors. Tumor tissue samples are diagnosed and identified by at least two different evaluators. If you have more questions then please feel free to contact us. Donor information can be supplied on request.

Tested applications **Suitable for:** WB

Properties

Mycoplasma free Yes

Form Liquid

Storage instructions Store at -80°C. Allow to warm to room temp and agitate gently before aliquotting.

Storage buffer Preservative: None
Constituents: 2% SDS, 10% Glycerol, 0.1% Bromophenol blue, Sodium Deoxycholate, Tergitol-NP40, EDTA, Magnesium chloride, HEPES, Sucrose, Potassium chloride, Protease inhibitor, 0.15M Beta mercaptoethanol, pH 7.9

Lysate notes Protein is isolated from whole tissue homogenates using a proprietary technique. The tissue was frozen in liquid nitrogen immediately after excision and then stored at -70°C. Quality control: 1. The isolated protein pattern on SDS-PAGE gel is visualized by coomassie blue staining. The pattern is consistent with each lot. 2. The isolated protein is Western Blot analyzed by either a GAPDH or beta-actin antibody. The expression level is consistent with each lot. Ethics: Human tissue samples are collected with the informed consent of the donors & relatives and are excised by licensed medical doctors. Tumor tissue samples are diagnosed and identified by at least two different evaluators. If you have more questions then please feel free to contact us. Donor information can be supplied on request.

Applications

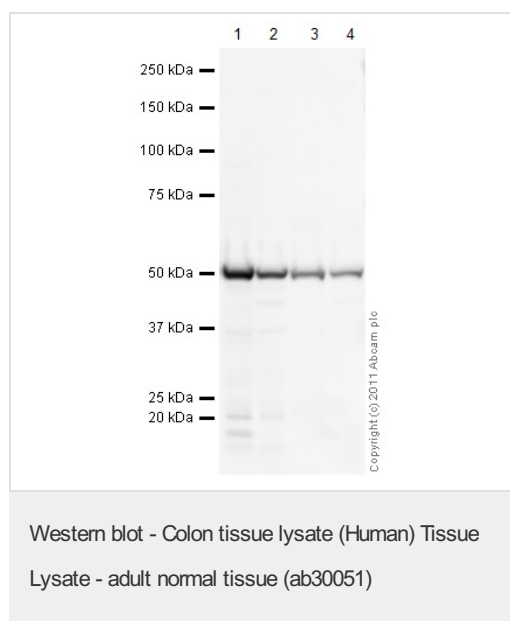
The Abpromise guarantee

Our [Abpromise guarantee](#) covers the use of ab30051 in the following tested applications.

The application notes include recommended starting dilutions; optimal dilutions/concentrations should be determined by the end user.

Application	Abreviews	Notes
WB		Use at an assay dependent dilution. Samples need to be boiled for 5 minutes and put on ice before use.

Images



All lanes : Anti-Selenium Binding Protein 1/SBP antibody ([ab90135](#))

Lane 1 : Human liver tissue lysate - total protein ([ab29889](#))

Lane 2 : Human colon tissue lysate - total protein (ab30051)

Lane 3 : Human spleen tissue lysate - total protein ([ab29699](#))

Lane 4 : Human placenta tissue lysate - total protein ([ab29745](#))

Lysates/proteins at 20 µg per lane.

Exposure time: 5 seconds

Please note: All products are "FOR RESEARCH USE ONLY. NOT FOR USE IN DIAGNOSTIC PROCEDURES"

Our Abpromise to you: Quality guaranteed and expert technical support

- Replacement or refund for products not performing as stated on the datasheet
- Valid for 12 months from date of delivery
- Response to your inquiry within 24 hours
- We provide support in Chinese, English, French, German, Japanese and Spanish
- Extensive multi-media technical resources to help you
- We investigate all quality concerns to ensure our products perform to the highest standards

If the product does not perform as described on this datasheet, we will offer a refund or replacement. For full details of the Abpromise, please visit <https://www.abcam.com/abpromise> or contact our technical team.

Terms and conditions

- Guarantee only valid for products bought direct from Abcam or one of our authorized distributors