

## Product datasheet

# Anti-SMURF1 antibody ab38866

★★★★☆ 2 Abreviews 11 References 2 Images

### Overview

<b>Product name</b>	Anti-SMURF1 antibody
<b>Description</b>	Rabbit polyclonal to SMURF1
<b>Host species</b>	Rabbit
<b>Tested applications</b>	<b>Suitable for:</b> ELISA, WB, IHC-P
<b>Species reactivity</b>	<b>Reacts with:</b> Mouse, Human
<b>Immunogen</b>	KLH-conjugated synthetic peptide selected from the N terminal region of human SMURF1 within aa 1~100.
<b>Positive control</b>	Mouse kidney tissue lysate, human breast carcinoma tissue.

### Properties

<b>Form</b>	Liquid
<b>Storage instructions</b>	Shipped at 4°C. Store at +4°C short term (1-2 weeks). Upon delivery aliquot. Store at -20°C long term.
<b>Storage buffer</b>	Preservative: 0.09% Sodium azide Constituent: PBS
<b>Purity</b>	Protein G purified
<b>Clonality</b>	Polyclonal
<b>Isotype</b>	IgG

### Applications

**The Abpromise guarantee** Our [Abpromise guarantee](#) covers the use of ab38866 in the following tested applications. The application notes include recommended starting dilutions; optimal dilutions/concentrations should be determined by the end user.

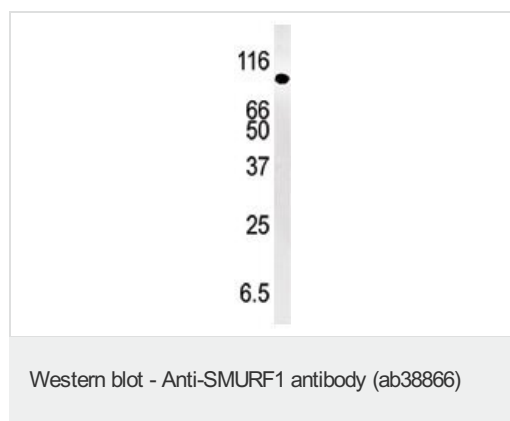
Application	Abreviews	Notes
ELISA		1/1000.
WB	★★★★☆ (2)	1/100 - 1/500. Detects a band of approximately 86 kDa (predicted molecular weight: 86 kDa).

Application	Abreviews	Notes
IHC-P		1/50 - 1/100.

## Target

<b>Function</b>	E3 ubiquitin-protein ligase that acts as a negative regulator of BMP signaling pathway. Acts by mediating ubiquitination and degradation of SMAD1 and SMAD5, 2 receptor-regulated SMADs specific for the BMP pathway. Promotes ubiquitination and subsequent proteasomal degradation of TRAF family members.
<b>Pathway</b>	Protein modification; protein ubiquitination.
<b>Sequence similarities</b>	Contains 1 C2 domain. Contains 1 HECT (E6AP-type E3 ubiquitin-protein ligase) domain. Contains 2 WW domains.
<b>Post-translational modifications</b>	Ubiquitinated by the SCF(FBXL15) complex at Lys-381 and Lys-383, leading to its degradation by the proteasome. Lys-383 is the primary ubiquitination site.
<b>Cellular localization</b>	Cytoplasm.

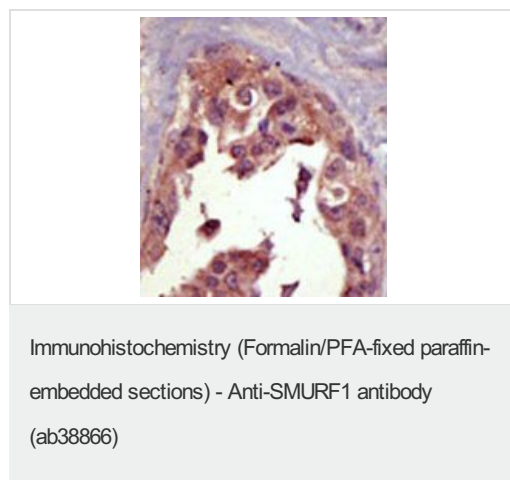
## Images



Anti-SMURF1 antibody (ab38866) at 1/100 dilution + mouse kidney tissue lysate at 35 µg

**Predicted band size:** 86 kDa

**Observed band size:** 86 kDa



[ab22983](#) at a 1/50 dilution, staining human breast carcinoma by immunohistochemistry by formalin-fixed and paraffin-embedded tissue, followed by AEC staining.

### **Our Abpromise to you: Quality guaranteed and expert technical support**

---

- Replacement or refund for products not performing as stated on the datasheet
- Valid for 12 months from date of delivery
- Response to your inquiry within 24 hours
  
- We provide support in Chinese, English, French, German, Japanese and Spanish
- Extensive multi-media technical resources to help you
- We investigate all quality concerns to ensure our products perform to the highest standards

If the product does not perform as described on this datasheet, we will offer a refund or replacement. For full details of the Abpromise, please visit <https://www.abcam.com/abpromise> or contact our technical team.

### **Terms and conditions**

---

- Guarantee only valid for products bought direct from Abcam or one of our authorized distributors