


Product datasheet

Anti-DPP9 antibody ab42079

★★★★★ 1 Abreviews 2 References 2 Images

Overview

Product name	Anti-DPP9 antibody
Description	Rabbit polyclonal to DPP9
Host species	Rabbit
Specificity	This antibody recognises all three forms of DPP9. This antibody does not recognise other DPP family members.
Tested applications	Suitable for: WB
Species reactivity	Reacts with: Cow, Human Predicted to work with: Mouse, Rat 
Immunogen	Synthetic peptide corresponding to the spacer region of human DPP9. Read Abcam's proprietary immunogen policy (Peptide available as ab44598 .)

Properties

Form	Liquid
Storage instructions	Shipped at 4°C. Upon delivery aliquot and store at -20°C. Avoid freeze / thaw cycles.
Storage buffer	Preservative: 0.05% Sodium azide Constituents: PBS, 50% Glycerol, 2.9% Sodium chloride
Purity	Immunogen affinity purified
Clonality	Polyclonal
Isotype	IgG

Applications

The Abpromise guarantee Our [Abpromise guarantee](#) covers the use of ab42079 in the following tested applications. The application notes include recommended starting dilutions; optimal dilutions/concentrations should be determined by the end user.

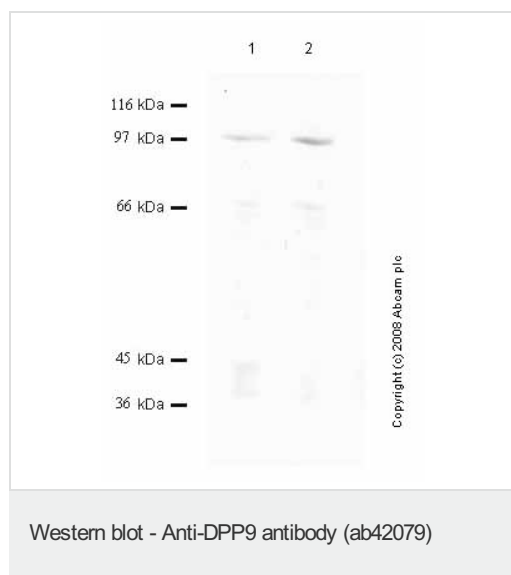
Application	Abreviews	Notes

Application	Abreviews	Notes
WB	★★★★☆ (1)	Use at an assay dependent dilution. Predicted molecular weight: 98 kDa. A recommended starting concentration for Western blots is 1/1000 when using colorimetric substrates such as BCIP/NBT and 1/5000 for chemiluminescent substrates.

Target

Function	Dipeptidyl peptidase that cleaves off N-terminal dipeptides from proteins having a Pro or Ala residue at position 2.
Tissue specificity	Ubiquitously expressed, with highest levels in liver, heart and muscle, and lowest levels in brain.
Sequence similarities	Belongs to the peptidase S9B family. DPPIV subfamily.
Cellular localization	Cytoplasm > cytosol.

Images

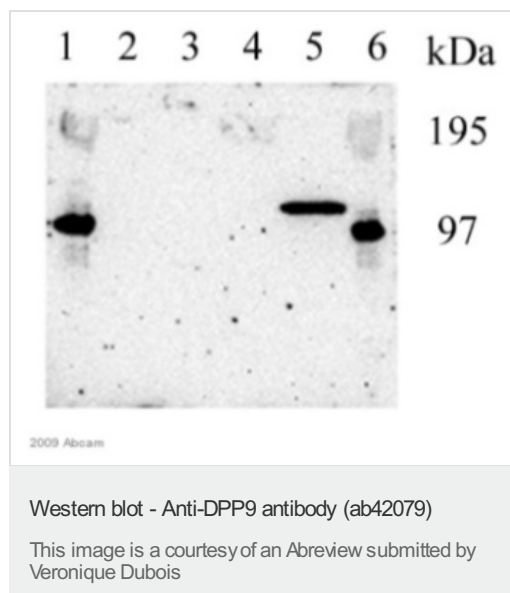


All lanes : Anti-DPP9 antibody (ab42079) at 1/1000 dilution

Lane 1 : Cell media from human prostate cancer DU145 cells (treated with SF)

Lane 2 : Cell media from human prostate cancer DU145 cells (treated with RA)

Predicted band size: 98 kDa



All lanes : Anti-DPP9 antibody (ab42079) at 1/5000 dilution

Lanes 1 & 6 : Molecular weight ladder

Lane 2 : Human DPPII protein

Lane 3 : Human DPPIV protein

Lane 4 : Recombinant DPP8 protein

Lane 5 : Purified DPP9 protein from Bovine testis

Lysates/proteins at 0.32 µg per lane.

Secondary

All lanes : HRP-conjugated goat to rabbit to IgG at 1/5000 dilution

Developed using the ECL technique.

Performed under reducing conditions.

Predicted band size: 98 kDa

Observed band size: 106 kDa

Exposure time: 12 minutes

Please note: All products are "FOR RESEARCH USE ONLY. NOT FOR USE IN DIAGNOSTIC PROCEDURES"

Our Abpromise to you: Quality guaranteed and expert technical support

- Replacement or refund for products not performing as stated on the datasheet
- Valid for 12 months from date of delivery
- Response to your inquiry within 24 hours
- We provide support in Chinese, English, French, German, Japanese and Spanish
- Extensive multi-media technical resources to help you
- We investigate all quality concerns to ensure our products perform to the highest standards

If the product does not perform as described on this datasheet, we will offer a refund or replacement. For full details of the Abpromise, please visit <https://www.abcam.com/abpromise> or contact our technical team.

Terms and conditions

- Guarantee only valid for products bought direct from Abcam or one of our authorized distributors