

Product datasheet

Anti-Smad1 antibody ab55476

[2 References](#) [3 Images](#)

Overview

Product name	Anti-Smad1 antibody
Description	Mouse monoclonal to Smad1
Host species	Mouse
Tested applications	Suitable for: WB, IHC-P, ICC/IF
Species reactivity	Reacts with: Human
Immunogen	Recombinant full length protein, corresponding to amino acids 1-466 of Human Smad1

Properties

Form	Liquid
Storage instructions	Shipped at 4°C. Upon delivery aliquot and store at -20°C or -80°C. Avoid repeated freeze / thaw cycles.
Storage buffer	Preservative: None PBS, pH 7.2
Purity	Protein G purified
Clonality	Monoclonal
Isotype	IgG1
Light chain type	kappa

Applications

The Abpromise guarantee Our [Abpromise guarantee](#) covers the use of ab55476 in the following tested applications. The application notes include recommended starting dilutions; optimal dilutions/concentrations should be determined by the end user.

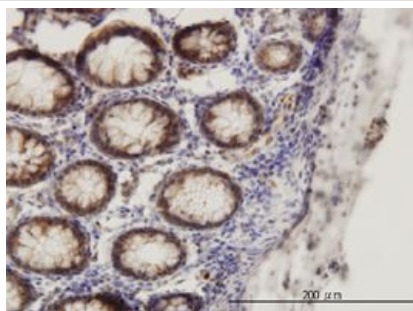
Application	Abreviews	Notes
WB		Use a concentration of 1 - 5 µg/ml. Predicted molecular weight: 52 kDa.
IHC-P		Use a concentration of 3 µg/ml.

Application	Abreviews	Notes
ICC/IF		Use a concentration of 10 µg/ml.

Target

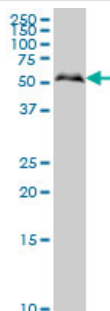
Function	Transcriptional modulator activated by BMP (bone morphogenetic proteins) type 1 receptor kinase. SMAD1 is a receptor-regulated SMAD (R-SMAD). SMAD1/OAZ1/PSMB4 complex mediates the degradation of the CREBBP/EP300 repressor SNIP1.
Tissue specificity	Ubiquitous. Highest expression seen in the heart and skeletal muscle.
Sequence similarities	Belongs to the dwarfin/SMAD family. Contains 1 MH1 (MAD homology 1) domain. Contains 1 MH2 (MAD homology 2) domain.
Post-translational modifications	Phosphorylated on serine by BMP type 1 receptor kinase. Ubiquitin-mediated proteolysis by SMAD-specific E3 ubiquitin ligase SMURF1.
Cellular localization	Cytoplasm. Nucleus. Cytoplasmic in the absence of ligand. Migrates to the nucleus when complexed with SMAD4. Co-localizes with LEMD3 at the nucleus inner membrane.

Images



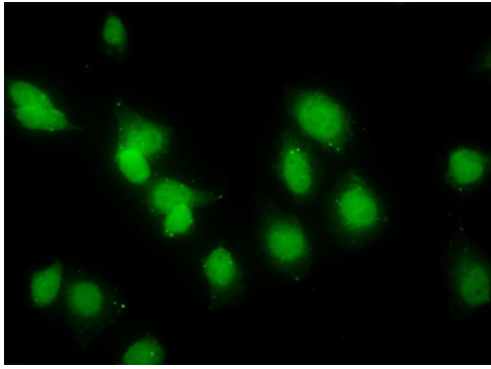
Smad1 antibody (ab55476) used in immunohistochemistry at 3µg/ml on formalin fixed and paraffin embedded human colon.

Immunohistochemistry (Formalin/PFA-fixed paraffin-embedded sections) - Anti-Smad1 antibody (ab55476)



Smad1 antibody (ab55476) at 1µg/lane + HeLa cell lysate at 25µg/lane.

Western blot - Anti-Smad1 antibody (ab55476)



Immunocytochemistry/ Immunofluorescence - Anti-Smad1 antibody (ab55476)

ab55476 at 10 µg/ml staining smad1 in human Hella cells by Immunocytochemistry/ Immunofluorescence.

Please note: All products are "FOR RESEARCH USE ONLY. NOT FOR USE IN DIAGNOSTIC PROCEDURES"

Our Abpromise to you: Quality guaranteed and expert technical support

- Replacement or refund for products not performing as stated on the datasheet
- Valid for 12 months from date of delivery
- Response to your inquiry within 24 hours
- We provide support in Chinese, English, French, German, Japanese and Spanish
- Extensive multi-media technical resources to help you
- We investigate all quality concerns to ensure our products perform to the highest standards

If the product does not perform as described on this datasheet, we will offer a refund or replacement. For full details of the Abpromise, please visit <https://www.abcam.com/abpromise> or contact our technical team.

Terms and conditions

- Guarantee only valid for products bought direct from Abcam or one of our authorized distributors