


Product datasheet

Anti-SLC38A4 antibody ab58785

[2 References](#) [1 Image](#)

Overview

Product name	Anti-SLC38A4 antibody
Description	Rabbit polyclonal to SLC38A4
Host species	Rabbit
Tested applications	Suitable for: WB
Species reactivity	Reacts with: Human Predicted to work with: Mouse, Rat, Rabbit, Horse, Guinea pig, Cow, Dog, Pig, Zebrafish 
Immunogen	Synthetic peptide within Human SLC38A4 aa 381-430. The exact sequence is proprietary.
Positive control	WB: Jurkat cell lysate.
General notes	<p>The Life Science industry has been in the grips of a reproducibility crisis for a number of years. Abcam is leading the way in addressing this with our range of recombinant monoclonal antibodies and knockout edited cell lines for gold-standard validation. Please check that this product meets your needs before purchasing.</p> <p>If you have any questions, special requirements or concerns, please send us an inquiry and/or contact our Support team ahead of purchase. Recommended alternatives for this product can be found below, along with publications, customer reviews and Q&As</p>

Properties

Form	Liquid
Storage instructions	Shipped at 4°C. Store at +4°C short term (1-2 weeks). Upon delivery aliquot. Store at -20°C long term. Avoid freeze / thaw cycle.
Storage buffer	pH: 7.2 Preservative: 0.09% Sodium azide Constituents: 2% Sucrose, PBS
Purity	Protein A purified
Clonality	Polyclonal
Isotype	IgG

Applications

The Abpromise guarantee

Our **Abpromise guarantee** covers the use of ab58785 in the following tested applications.

The application notes include recommended starting dilutions; optimal dilutions/concentrations should be determined by the end user.

Application	Abreviews	Notes
WB		Use a concentration of 2.5 µg/ml. Predicted molecular weight: 61 kDa. Good results were obtained when blocked with 5% non-fat dry milk in 0.05% PBS-T.

Target

Function

Sodium-dependent amino acid transporter. Mediates electrogenic symport of neutral amino acids and sodium ions. Has a broad specificity, with a preference for Ala, followed by His, Cys, Asn, Ser, Gly, Val, Thr, Gln and Met. May mediate sodium-independent transport of cationic amino acids, such as Arg and Lys. Amino acid uptake is pH-dependent, with low transport activities at pH 6.5, intermediate at pH 7.0 and highest between pH 7.5 and 8.5.

Tissue specificity

Detected in embryonic and adult liver, and at lower levels in adult muscle, kidney and pancreas. Detected in placenta syncytiotrophoblasts throughout gestation. Detected in fetal blood vessels.

Sequence similarities

Belongs to the amino acid/polyamine transporter 2 family.

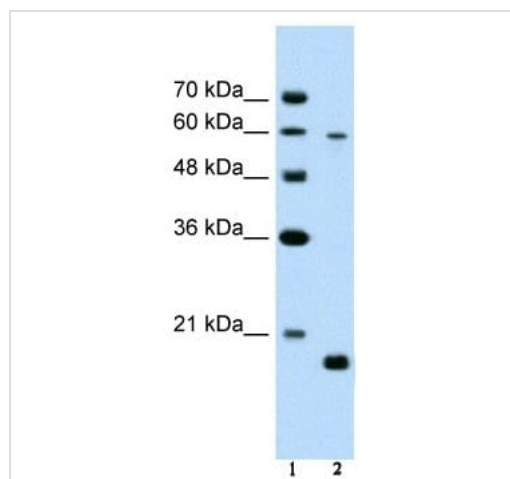
Post-translational modifications

The disulfide bond plays an important role in substrate transport, but has no effect on trafficking to the cell surface.

Cellular localization

Cell membrane.

Images



Western blot - Anti-SLC38A4 antibody (ab58785)

Lane 1 : marker

Lane 2 : Anti-SLC38A4 antibody (ab58785) at 2.5 µg/ml

Lane 2 : Jurkat cell lysate at 10 µg with 5% skim milk in PBS buffer

Secondary

Lane 2 : HRP conjugated anti-Rabbit IgG at 1/50000 dilution

Predicted band size: 61 kDa

Gel concentration 12%

Please note: All products are "FOR RESEARCH USE ONLY. NOT FOR USE IN DIAGNOSTIC PROCEDURES"

Our Abpromise to you: Quality guaranteed and expert technical support

- Replacement or refund for products not performing as stated on the datasheet
- Valid for 12 months from date of delivery
- Response to your inquiry within 24 hours

- We provide support in Chinese, English, French, German, Japanese and Spanish
- Extensive multi-media technical resources to help you
- We investigate all quality concerns to ensure our products perform to the highest standards

If the product does not perform as described on this datasheet, we will offer a refund or replacement. For full details of the Abpromise, please visit <https://www.abcam.com/abpromise> or contact our technical team.

Terms and conditions

- Guarantee only valid for products bought direct from Abcam or one of our authorized distributors