


Product datasheet

Anti-PKC alpha antibody ab66181

2 Images

Overview

Product name	Anti-PKC alpha antibody
Description	Rabbit polyclonal to PKC alpha
Host species	Rabbit
Tested applications	Suitable for: WB, ICC/IF
Species reactivity	Reacts with: Mouse, Rat, Human Predicted to work with: Rabbit 
Immunogen	Synthetic peptide conjugated to KLH derived from within residues 650 to the C-terminus of Human PKC alpha.Read Abcam's proprietary immunogen policy(Peptide available as ab71206 .)
Positive control	This antibody gave a positive signal in the following lysates: HeLa whole cell Rat Colon Tissue Mouse Spinal Cord Tissue Rat Spinal Cord Tissue Human Brain Tissue Rat Brain Tissue Mouse Thymus Tissue

Properties

Form	Liquid
Storage instructions	Store at +4°C short term (1-2 weeks). Aliquot and store at -20°C or -80°C. Avoid repeated freeze / thaw cycles.
Storage buffer	Preservative: 0.02% Sodium Azide Constituents: 1% BSA, PBS, pH 7.4
Purity	Immunogen affinity purified
Clonality	Polyclonal
Isotype	IgG

Applications

The Abpromise guarantee Our [Abpromise guarantee](#) covers the use of ab66181 in the following tested applications. The application notes include recommended starting dilutions; optimal dilutions/concentrations should be determined by the end user.

Application	Abreviews	Notes

Application	Abreviews	Notes
WB		Use a concentration of 1 µg/ml. Detects a band of approximately 77 kDa (predicted molecular weight: 77 kDa).
ICC/IF		Use a concentration of 5 µg/ml.

Target

Function

This is a calcium-activated, phospholipid-dependent, serine- and threonine-specific enzyme. May play a role in cell motility by phosphorylating CSPG4.

PKC is activated by diacylglycerol which in turn phosphorylates a range of cellular proteins. PKC also serves as the receptor for phorbol esters, a class of tumor promoters.

Sequence similarities

Belongs to the protein kinase superfamily. AGC Ser/Thr protein kinase family. PKC subfamily.

Contains 1 AGC-kinase C-terminal domain.

Contains 1 C2 domain.

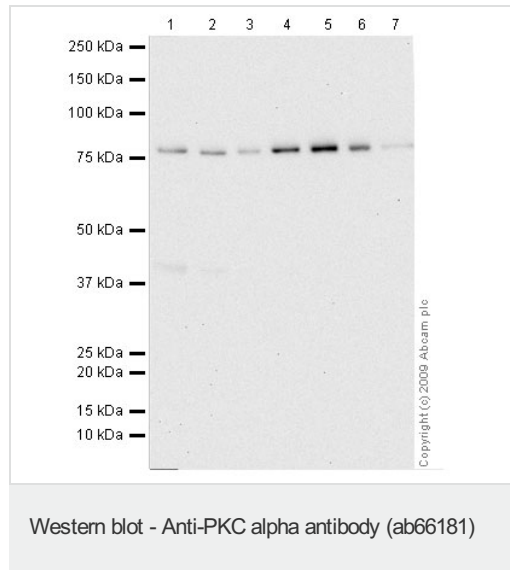
Contains 2 phorbol-ester/DAG-type zinc fingers.

Contains 1 protein kinase domain.

Cellular localization

Cytoplasm. Cell membrane. Nucleus.

Images



All lanes : Anti-PKC alpha antibody (ab66181) at 1/250 dilution

Lane 1 : Colon (Rat) Tissue Lysate

Lane 2 : Spinal Cord (Rat) Tissue Lysate

Lane 3 : Spinal Cord (Mouse) Tissue Lysate

Lane 4 : HeLa (Human epithelial carcinoma cell line) Whole Cell Lysate

Lane 5 : Human brain tissue lysate - total protein ([ab29466](#))

Lane 6 : Brain (Rat) Tissue Lysate

Lane 7 : Thymus (Mouse) Tissue Lysate

Lysates/proteins at 10 µg per lane.

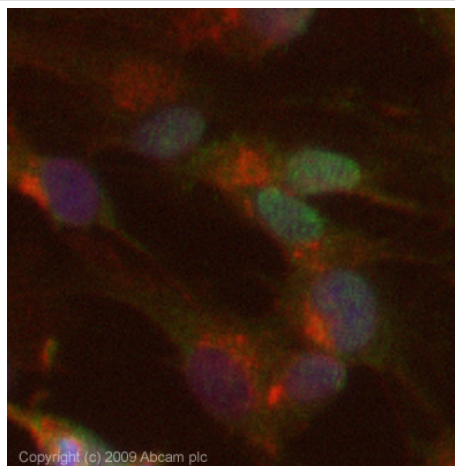
Secondary

All lanes : Goat polyclonal to Rabbit IgG - H&L - Pre-Adsorbed (HRP) at 1/3000 dilution

Performed under reducing conditions.

Predicted band size: 77 kDa

Observed band size: 77 kDa



Immunocytochemistry/ Immunofluorescence - Anti-
PKC alpha antibody (ab66181)

ICC/IF image of ab66181 stained HepG2 cells. The cells were 4% PFA fixed (10 min) and then incubated in 1%BSA / 10% normal Goat serum / 0.3M glycine in 0.1% PBS-Tween for 1h to permeabilise the cells and block non-specific protein-protein interactions. The cells were then incubated with the antibody (ab66181, 5µg/ml) overnight at +4°C. The secondary antibody (green) was Alexa Fluor® 488 Goat anti-Rabbit IgG (H+L) used at a 1/1000 dilution for 1h. Alexa Fluor® 594 WGA was used to label plasma membranes (red) at a 1/200 dilution for 1h. DAPI was used to stain the cell nuclei (blue) at a concentration of 1.43µM. This antibody also gave a positive result in 4% PFA fixed (10 min) HeLa, Hek293, MCF-7 cells at 5µg/ml.

Please note: All products are "FOR RESEARCH USE ONLY. NOT FOR USE IN DIAGNOSTIC PROCEDURES"

Our Abpromise to you: Quality guaranteed and expert technical support

- Replacement or refund for products not performing as stated on the datasheet
- Valid for 12 months from date of delivery
- Response to your inquiry within 24 hours
- We provide support in Chinese, English, French, German, Japanese and Spanish
- Extensive multi-media technical resources to help you
- We investigate all quality concerns to ensure our products perform to the highest standards

If the product does not perform as described on this datasheet, we will offer a refund or replacement. For full details of the Abpromise, please visit <https://www.abcam.com/abpromise> or contact our technical team.

Terms and conditions

- Guarantee only valid for products bought direct from Abcam or one of our authorized distributors