


Product datasheet

Anti-LC3B antibody (Biotin) ab81785

★★★★★ 8 Abreviews 5 References 3 Images

Overview

Product name	Anti-LC3B antibody (Biotin)
Description	Rabbit polyclonal to LC3B (Biotin)
Host species	Rabbit
Conjugation	Biotin
Specificity	LC3-I is cytoplasmic. LC3-II binds to the autophagic membranes.
Tested applications	Suitable for: WB, IP, IHC-P
Species reactivity	Reacts with: Mouse, Rat, Hamster, Human, Zebrafish, Syrian hamster, Bacteria Predicted to work with: Cow 
Immunogen	Synthetic peptide corresponding to Human LC3B (N terminal). Synthetic peptide made to an N-terminal portion of human LC3 B protein (between residues 1-100). Database link: Q9GZQ8
Positive control	Brain, cerebral cortex. Mouse ES cell lysates. Human/mouse brain lysate, ES, HeLa, HEK293, MCF7 cells, human lymphoblasts, and embryoid bodies.

Properties

Form	Liquid
Storage instructions	Shipped at 4°C. Store at +4°C short term (1-2 weeks). Store at -20°C or -80°C. Avoid freeze / thaw cycle.
Storage buffer	Constituent: PBS
Purity	Immunogen affinity purified
Clonality	Polyclonal
Isotype	IgG

Applications

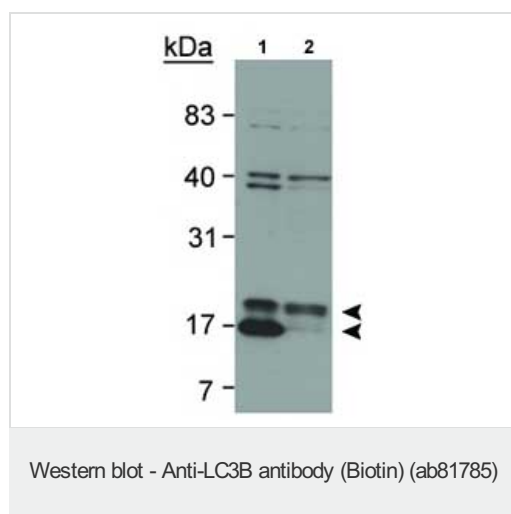
The Abpromise guarantee Our [Abpromise guarantee](#) covers the use of ab81785 in the following tested applications.
The application notes include recommended starting dilutions; optimal dilutions/concentrations should be determined by the end user.

Application	Abreviews	Notes
WB	★★★★★ (4)	Use a concentration of 2 µg/ml. Predicted molecular weight: 15 kDa.
IP		Use at 40 µg/mg of lysate.
IHC-P	★★★★★ (1)	1/200 - 1/400.

Target

Function	Probably involved in formation of autophagosomal vacuoles (autophagosomes).
Tissue specificity	Most abundant in heart, brain, skeletal muscle and testis. Little expression observed in liver.
Sequence similarities	Belongs to the MAP1 LC3 family.
Post-translational modifications	The precursor molecule is cleaved by APG4B/ATG4B to form LC3-I. This is activated by APG7L/ATG7, transferred to ATG3 and conjugated to phospholipid to form LC3-II.
Cellular localization	Cytoplasm > cytoskeleton. Endomembrane system. Cytoplasmic vesicle > autophagosome membrane. LC3-II binds to the autophagic membranes.

Images



All lanes : Anti-LC3B antibody (Biotin) (ab81785) at 2 µg/ml

Lane 1 : Atg5+/+ mouse ES cell lysate

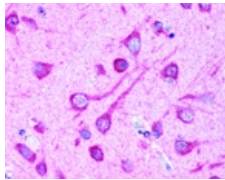
Lane 2 : Atg5-/- mouse ES cell lysate

Predicted band size: 15 kDa

Observed band size: 17,19 kDa

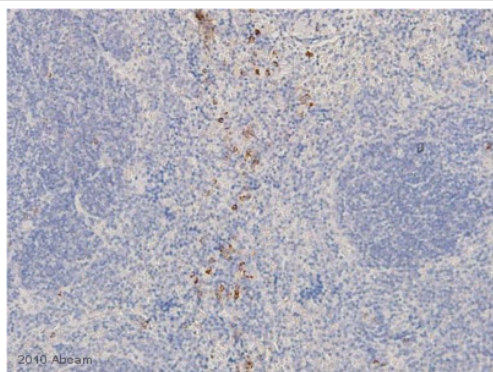
Additional bands at: 38 kDa, 40 kDa, 80 kDa. We are unsure as to the identity of these extra bands.

In Western blot, bands are seen ~17 and 19 kDa corresponding to LC3-II and LC3-I.



Immunohistochemistry (Formalin/PFA-fixed paraffin-embedded sections) - Anti-LC3B antibody (Biotin) (ab81785)

ab81785, at 1/200 dilution, staining LC3A/B in brain, cerebral cortex, neurons with cell processes by Immunohistochemistry using paraffin-embedded tissue.



Immunohistochemistry (Formalin/PFA-fixed paraffin-embedded sections) - Anti-LC3B antibody (Biotin) (ab81785)

This image is courtesy of an anonymous Abreview

ab81785 staining LC3A/B in Mouse kidney tissue sections by Immunohistochemistry (IHC-P - formaldehyde-fixed, paraffin-embedded sections). Tissue was fixed with formaldehyde and blocked with 5% protein block for 5 minutes at room temperature; antigen retrieval was by heat mediation. Samples were incubated with primary antibody (1/50) for 1 hour. Anti-mouse HRP (ab6728) (1/200) was used as the secondary antibody.

Please note: All products are "FOR RESEARCH USE ONLY. NOT FOR USE IN DIAGNOSTIC PROCEDURES"

Our Abpromise to you: Quality guaranteed and expert technical support

- Replacement or refund for products not performing as stated on the datasheet
- Valid for 12 months from date of delivery
- Response to your inquiry within 24 hours
- We provide support in Chinese, English, French, German, Japanese and Spanish
- Extensive multi-media technical resources to help you
- We investigate all quality concerns to ensure our products perform to the highest standards

If the product does not perform as described on this datasheet, we will offer a refund or replacement. For full details of the Abpromise, please visit <https://www.abcam.com/abpromise> or contact our technical team.

Terms and conditions

- Guarantee only valid for products bought direct from Abcam or one of our authorized distributors