


## Product datasheet

# Anti-GNAS antibody ab83735

★★★★★ 2 Abreviews 7 References 7 Images

### Overview

<b>Product name</b>	Anti-GNAS antibody
<b>Description</b>	Rabbit polyclonal to GNAS
<b>Host species</b>	Rabbit
<b>Tested applications</b>	<b>Suitable for:</b> IHC-P, WB
<b>Species reactivity</b>	<b>Reacts with:</b> Human <b>Predicted to work with:</b> Mouse, Rat, Rabbit, Horse, Guinea pig, Cow, Dog 
<b>Immunogen</b>	Synthetic peptide within residues: VYRATHRLLL LGAGESGKST MKQMRILHV NGFN GEGGEE DPQAARSNSD , corresponding to N terminal amino acids 36-85 of Human G protein alpha S (NP_000507). <a href="#">Run BLAST with ExPASy</a> <a href="#">Run BLAST with NCBI</a>
<b>Positive control</b>	WB: Jurkat and MCF7 cell lysates; Human lung tumor lysate. IHC-P: Human pancreas and thyroid tissues.
<b>General notes</b>	<p>The Life Science industry has been in the grips of a reproducibility crisis for a number of years. Abcam is leading the way in addressing this with our range of recombinant monoclonal antibodies and knockout edited cell lines for gold-standard validation. Please check that this product meets your needs before purchasing.</p> <p>If you have any questions, special requirements or concerns, please send us an inquiry and/or contact our Support team ahead of purchase. Recommended alternatives for this product can be found below, along with publications, customer reviews and Q&amp;As</p>

### Properties

<b>Form</b>	Liquid
<b>Storage instructions</b>	Shipped at 4°C. Store at +4°C short term (1-2 weeks). Upon delivery aliquot. Store at -20°C long term. Avoid freeze / thaw cycle.
<b>Storage buffer</b>	pH: 7.2 Preservative: 0.09% Sodium azide Constituents: 2% Sucrose, PBS
<b>Purity</b>	Immunogen affinity purified
<b>Clonality</b>	Polyclonal
<b>Isotype</b>	IgG

## Applications

### The Abpromise guarantee

Our [Abpromise guarantee](#) covers the use of ab83735 in the following tested applications.

The application notes include recommended starting dilutions; optimal dilutions/concentrations should be determined by the end user.

Application	Abreviews	Notes
IHC-P		Use a concentration of 5 µg/ml.
WB	★★★★★ (1)	Use a concentration of 1 µg/ml. Detects a band of approximately 46 kDa (predicted molecular weight: 46 kDa). Good results were obtained when blocked with 5% non-fat dry milk in 0.05% PBS-T.

## Target

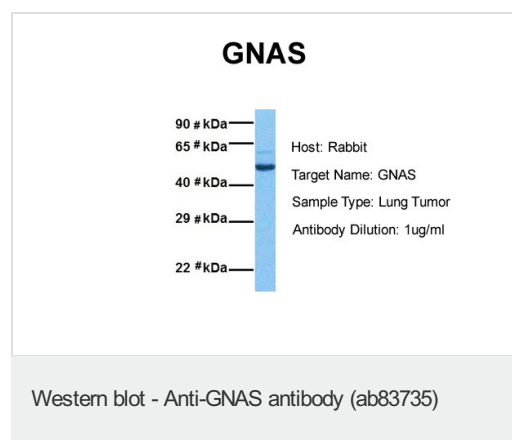
### Relevance

Guanine nucleotide-binding proteins (G proteins) are involved as modulators or transducers in various transmembrane signaling systems. The G<sub>s</sub> protein is involved in hormonal regulation of adenylate cyclase: it activates the cyclase in response to beta-adrenergic stimuli. Alternative splicing of downstream exons of the GNAS gene is observed, which results in different forms of the stimulatory G protein alpha subunit, a key element of the classical signal transduction pathway linking receptor-ligand interactions with the activation of adenylyl cyclase and a variety of cellular responses. Multiple transcript variants have been found for this gene, but the full-length nature and/or biological validity of some variants have not been determined. Mutations in this gene result in pseudohypoparathyroidism type 1a, pseudohypoparathyroidism type 1b, Albright hereditary osteodystrophy, pseudopseudohypoparathyroidism, McCune-Albright syndrome, progressive osseous heteroplasia, polyostotic fibrous dysplasia of bone, and some pituitary tumors.

### Cellular localization

Cell Membrane

## Images

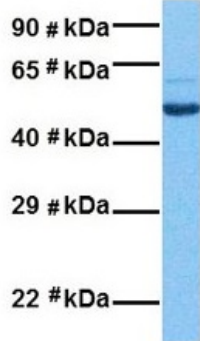




Western blot - Anti-G protein alpha S antibody  
(ab83735)

Anti-GNAS antibody (ab83735) at 1 µg/ml + Jurkat (human T cell leukemia cell line from peripheral blood) whole cell lysate

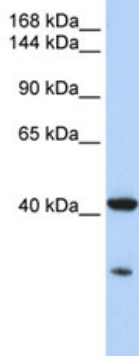
**Predicted band size:** 46 kDa



Western blot - Anti-G protein alpha S antibody  
(ab83735)

Anti-GNAS antibody (ab83735) at 1 µg/ml + Human lung tumor lysate

**Predicted band size:** 46 kDa



Western blot - Anti-G protein alpha S antibody  
(ab83735)

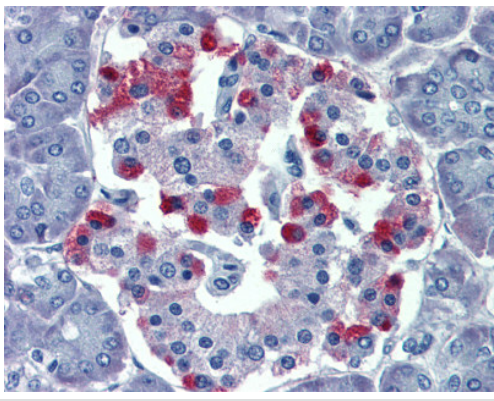
Anti-GNAS antibody (ab83735) at 1 µg/ml (5% skim milk / PBS buffer) + MCF7 cell lysate at 10 µg

### Secondary

HRP conjugated anti-Rabbit IgG at 1/50000 dilution

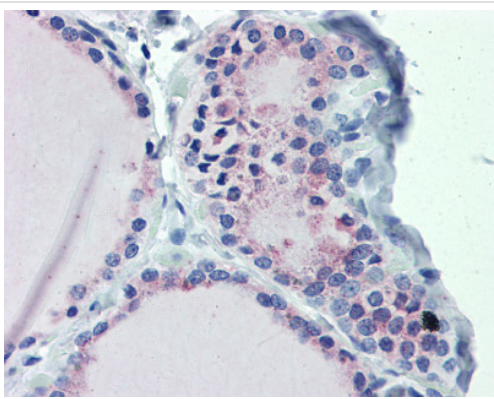
**Predicted band size:** 46 kDa

**Observed band size:** 46 kDa



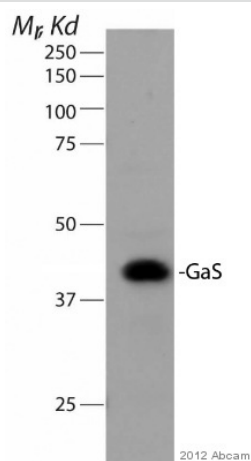
Immunohistochemistry (Formalin/PFA-fixed paraffin-embedded sections) - Anti-G protein alpha S antibody (ab83735)

[ab83690](#) at 5 µg/ml staining G protein alpha S in Human pancreas tissue by Immunohistochemistry (Formalin/PFA-fixed, paraffin-embedded sections).



Immunohistochemistry (Formalin/PFA-fixed paraffin-embedded sections) - Anti-G protein alpha S antibody (ab83735)

[ab83690](#) at 5 µg/ml staining G protein alpha S in Human thyroid tissue by Immunohistochemistry (Formalin/PFA-fixed, paraffin-embedded sections).



Western blot - Anti-G protein alpha S antibody (ab83735)

This image is courtesy of an anonymous Abreview

Anti-GNAS antibody (ab83735) at 1/500 dilution + murine MeJuSo cells at 20 µg

### Secondary

HRP-conjugated goat anti-rabbit polyclonal IgG at 1/10000 dilution

Developed using the ECL technique.

Performed under reducing conditions.

**Predicted band size:** 46 kDa

**Observed band size:** 43 kDa

**Please note:** All products are "FOR RESEARCH USE ONLY. NOT FOR USE IN DIAGNOSTIC PROCEDURES"

### **Our Abpromise to you: Quality guaranteed and expert technical support**

---

- Replacement or refund for products not performing as stated on the datasheet
- Valid for 12 months from date of delivery
- Response to your inquiry within 24 hours
- We provide support in Chinese, English, French, German, Japanese and Spanish
- Extensive multi-media technical resources to help you
- We investigate all quality concerns to ensure our products perform to the highest standards

If the product does not perform as described on this datasheet, we will offer a refund or replacement. For full details of the Abpromise, please visit <https://www.abcam.com/abpromise> or contact our technical team.

### **Terms and conditions**

---

- Guarantee only valid for products bought direct from Abcam or one of our authorized distributors