

Product datasheet

Anti-S100 antibody [6G1] ab85137

★★★★★ 1 Abreviews 1 References 1 Image

Overview

Product name	Anti-S100 antibody [6G1]
Description	Mouse monoclonal [6G1] to S100
Host species	Mouse
Specificity	Clone 6G1 is specific for S-100 beta beta and and S100 alpha beta
Tested applications	Suitable for: Other, Flow Cyt, ELISA, Sandwich ELISA, WB
Species reactivity	Reacts with: Human
Immunogen	Human S-100 protein
General notes	Concentration varies from lot to lot and can be provided on request.

Properties

Form	Liquid
Storage instructions	Shipped at 4°C. Upon delivery aliquot and store at -20°C or -80°C. Avoid repeated freeze / thaw cycles.
Storage buffer	Preservative: 0.05% Proclin Constituents: PBS, pH 7.4
Purity	Protein A purified
Purification notes	Purified by chromatography on protein A sepharose. Purity tested by electrophoresis.
Clonality	Monoclonal
Clone number	6G1
Myeloma	Sp2/0
Isotype	IgG1

Applications

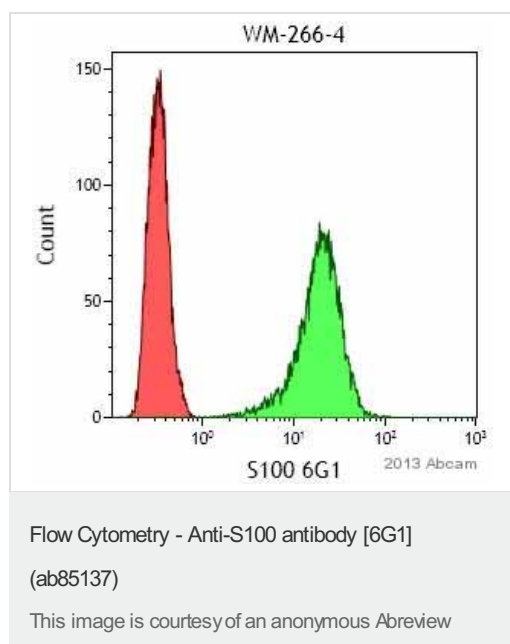
The Abpromise guarantee Our [Abpromise guarantee](#) covers the use of ab85137 in the following tested applications.
The application notes include recommended starting dilutions; optimal dilutions/concentrations should be determined by the end user.

Application	Abreviews	Notes
Other		Use at an assay dependent concentration.
Flow Cyt	★★★★★ (1)	1/100. ab170190 - Mouse monoclonal IgG1, is suitable for use as an isotype control with this antibody.
ELISA		Use at an assay dependent concentration.
Sandwich ELISA		Use at an assay dependent concentration.
WB		Use at an assay dependent concentration. Predicted molecular weight: 10 kDa.

Target

Function	Weakly binds calcium but binds zinc very tightly-distinct binding sites with different affinities exist for both ions on each monomer. Physiological concentrations of potassium ion antagonize the binding of both divalent cations, especially affecting high-affinity calcium-binding sites.
Tissue specificity	Highly prevalent in heart. Also found in lesser quantities in skeletal muscle and brain.
Sequence similarities	Belongs to the S-100 family. Contains 2 EF-hand domains.
Cellular localization	Cytoplasm.

Images



ab85137 staining S100 in the Human melanoma cell line by Flow Cytometry. Cells were fixed with formaldehyde and permeabilized with saponine. The sample was incubated with the primary antibody (1/100 in PBS) for 15 minutes at 20°C. [ab96879](#), Goat anti-mouse IgG polyclonal (1/100) was used as the secondary antibody.

Our Abpromise to you: Quality guaranteed and expert technical support

- Replacement or refund for products not performing as stated on the datasheet
- Valid for 12 months from date of delivery
- Response to your inquiry within 24 hours
- We provide support in Chinese, English, French, German, Japanese and Spanish
- Extensive multi-media technical resources to help you
- We investigate all quality concerns to ensure our products perform to the highest standards

If the product does not perform as described on this datasheet, we will offer a refund or replacement. For full details of the Abpromise, please visit <https://www.abcam.com/abpromise> or contact our technical team.

Terms and conditions

- Guarantee only valid for products bought direct from Abcam or one of our authorized distributors